



WWF engages cities in South Africa and across the globe on the road to sustainable urban mobility



Louise Scholtz , WWF South Africa
Emelie Kärre, WWF Sweden and
Cities core team



EARTH HOUR CITY CHALLENGE



WWF in strategic partnership with

VOLVO



CLIMATE SAVERS

碳减排先锋

DEFENSORES DO CLIMA

クライメート・セイバーズ

A WWF GLOBAL INITIATIVE WITH BUSINESS

HIGH CO₂

LOW CO₂





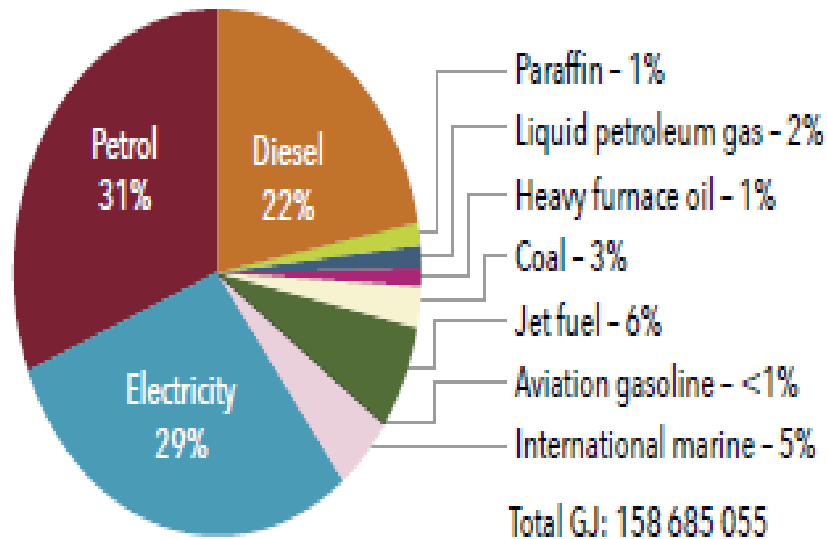
Mobility in South Africa – context, challenges and imperatives



Typical energy profile of South African cities

Figure 1: Energy consumption by energy source, Cape Town, 2012*

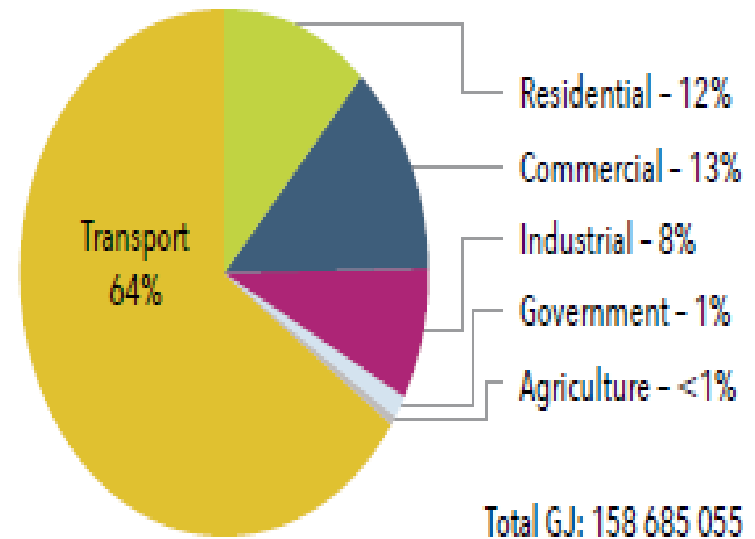
* Including aviation, international marine, electricity losses



Source: City of Cape Town, Eskom, Province, SAPIA.

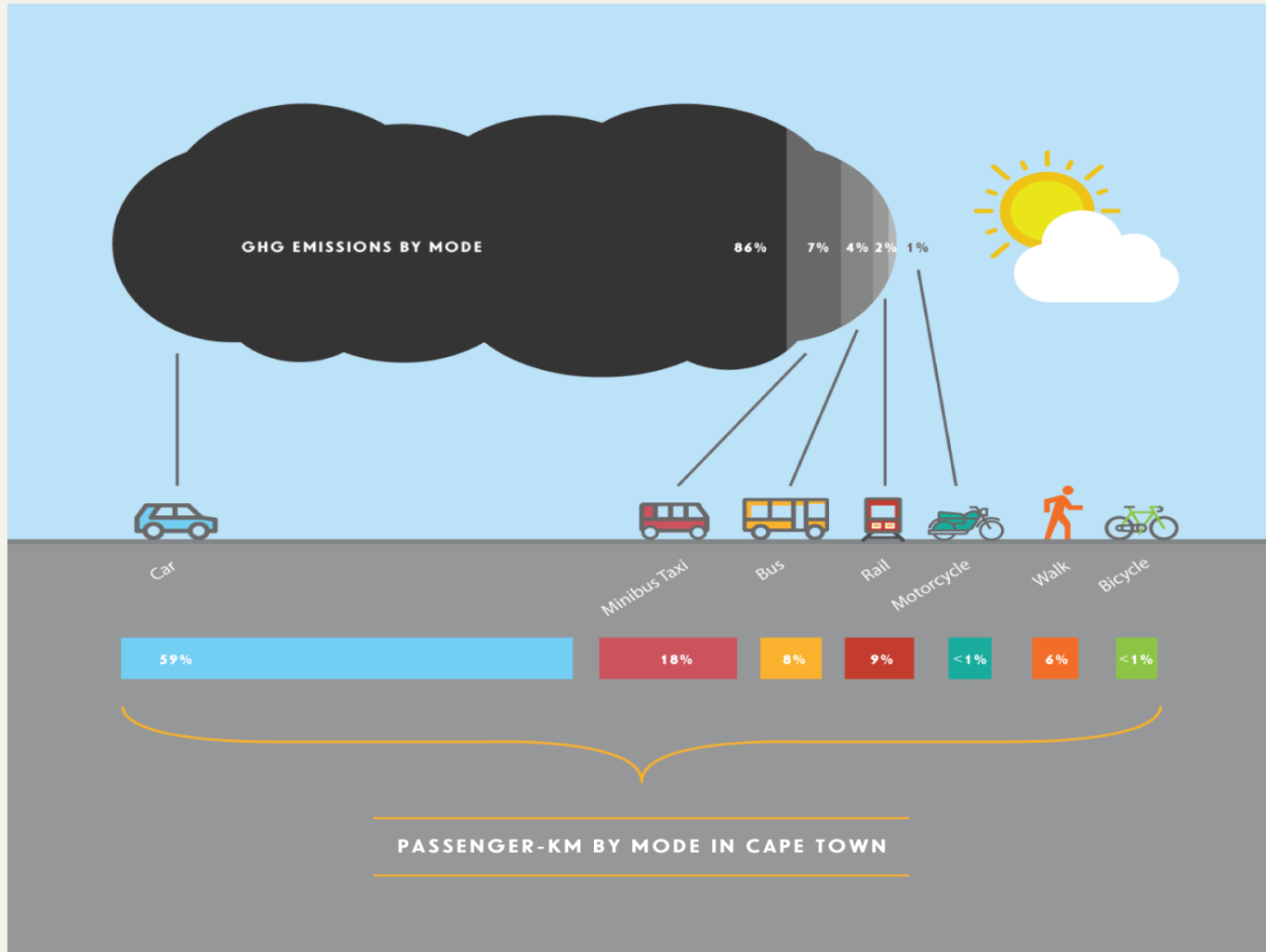
Figure 2: Energy consumption by sector, Cape Town, 2012*

* Including aviation, international marine; excluding electricity losses



Source: City of Cape Town, Eskom, Province, SAPIA.

The need to shift transport behaviour in SA



Data: Various. Analysis: Zanie Cilliers, SEA