



EcoMobility

An ICLEI - Local Governments for Sustainability Initiative



Ingredients for planning for bicycles

Santhosh Kodukula, EcoMobility Program Manager, ICLEI

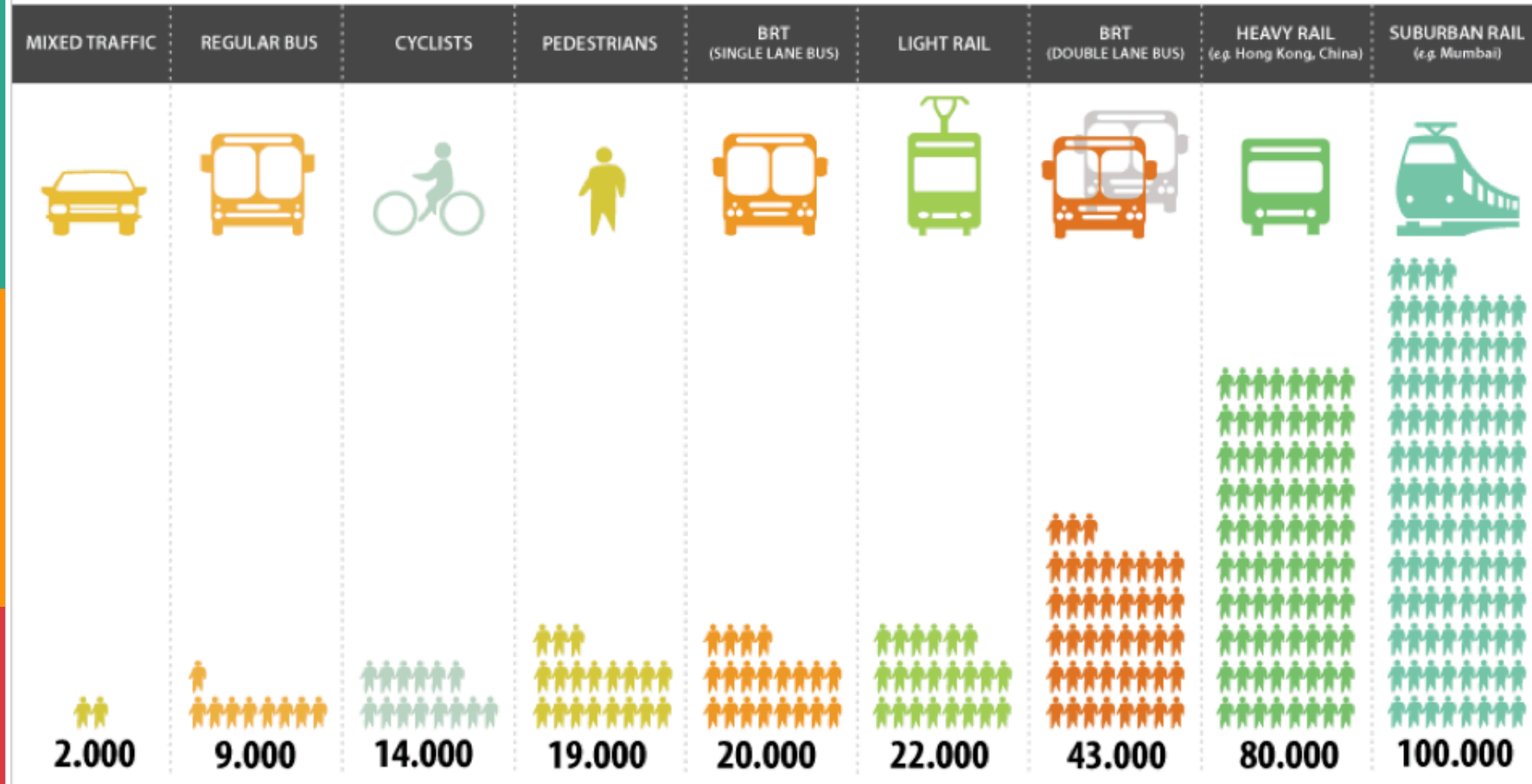
03 November 2016, Beijing, PR China

Which mode of transport is efficient?

MAKING THE MOST OUT OF SCARCE ROAD SPACE

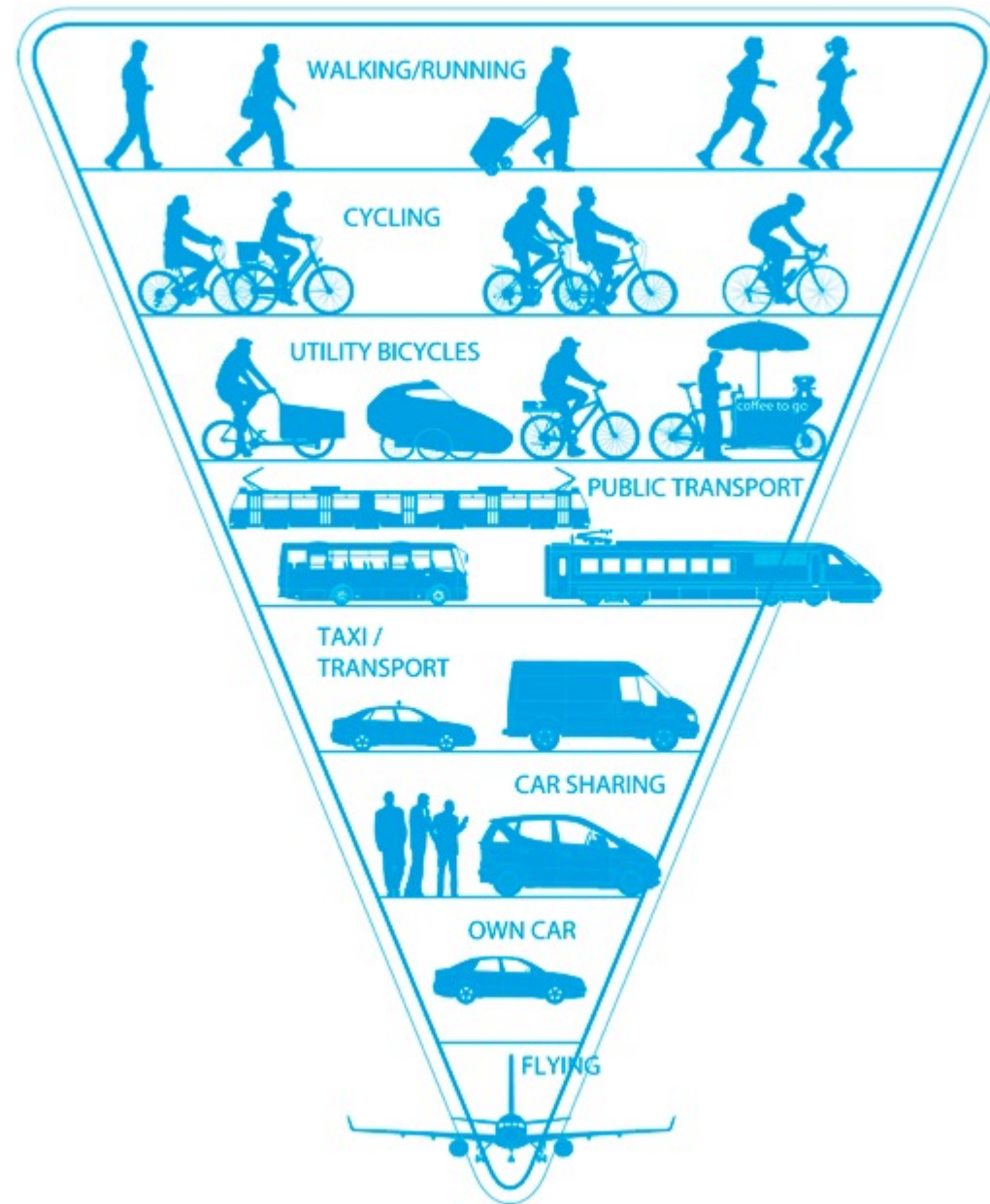
people per hour on 3.5-meter wide lane in the city

Depending on vehicle size, occupancy or loading, and speed, the use of space can vary greatly for different modes of travel - potential passenger volumes vary greatly by mode along a corridor. The car is the most spatially inefficient mode. Dense urban centers cannot effectively be served by cars, since not enough people can be delivered to the center.



Alternative is Ecomobility

- walking,
- cycling,
- public transport,
- Light (e-) vehicles
- shared mobility and
- other innovative mobility options



‘No transport project was/is/will be complete without proper priority for Non-motorised transport and proper integration’

Pedestrians



Who are these...

Anyone using a road is a pedestrian
at one point

- Walkers
- Joggers
- Cyclists
- Transit Users
- Car users (yes they also need to walk)

What do pedestrians need?

Types of pedestrians –
exercise, leisure, work

Speeds : Avg. speed is 4 ft /sec (2.5 – >8 ft/sec)

So for making
pedestrians walk
we need **SPACE**



An ICLEI - Local Governments for Sustainability Initiative



SPACE

Safety or Security



Carlos F. Pardo © 2007

SPACE

Priority



SPACE

Accessibility



SPACE

Comfort



SPACE

Enjoyable



Cyclists



What do CYCLISTS NEED?



- Connected Routes
- Direct Routes
- Safety
- Comfort
- Attractive

Coherent and Continuous

- Same quality
- Connected
- Signage



Direct Routes

- Bicycles get a direct route
- No-Detours
- Reduce delays
- NMT priority Junctions



Safety

- For the rider
- For the bike

If the motor vehicle
speed is **>30 kmph**
then **physically**
separate bicycles
and motor vehicles



Comfort



Attractive

Note the separation between pedestrians and cyclists!



**Thanks a
lot for your
patience**

Don't hesitate to contact us

E: santhosh.kodukula@iclei.org

W: www.ecomobility.org

Follow us: @ecomobility_

Like us: www.facebook.com/ecomobility.org

Also of interest to you

EcoMobility World Festival 2017

– Join us in Kaohsiung in October 2017 to see an entire neighbourhood go car free!