



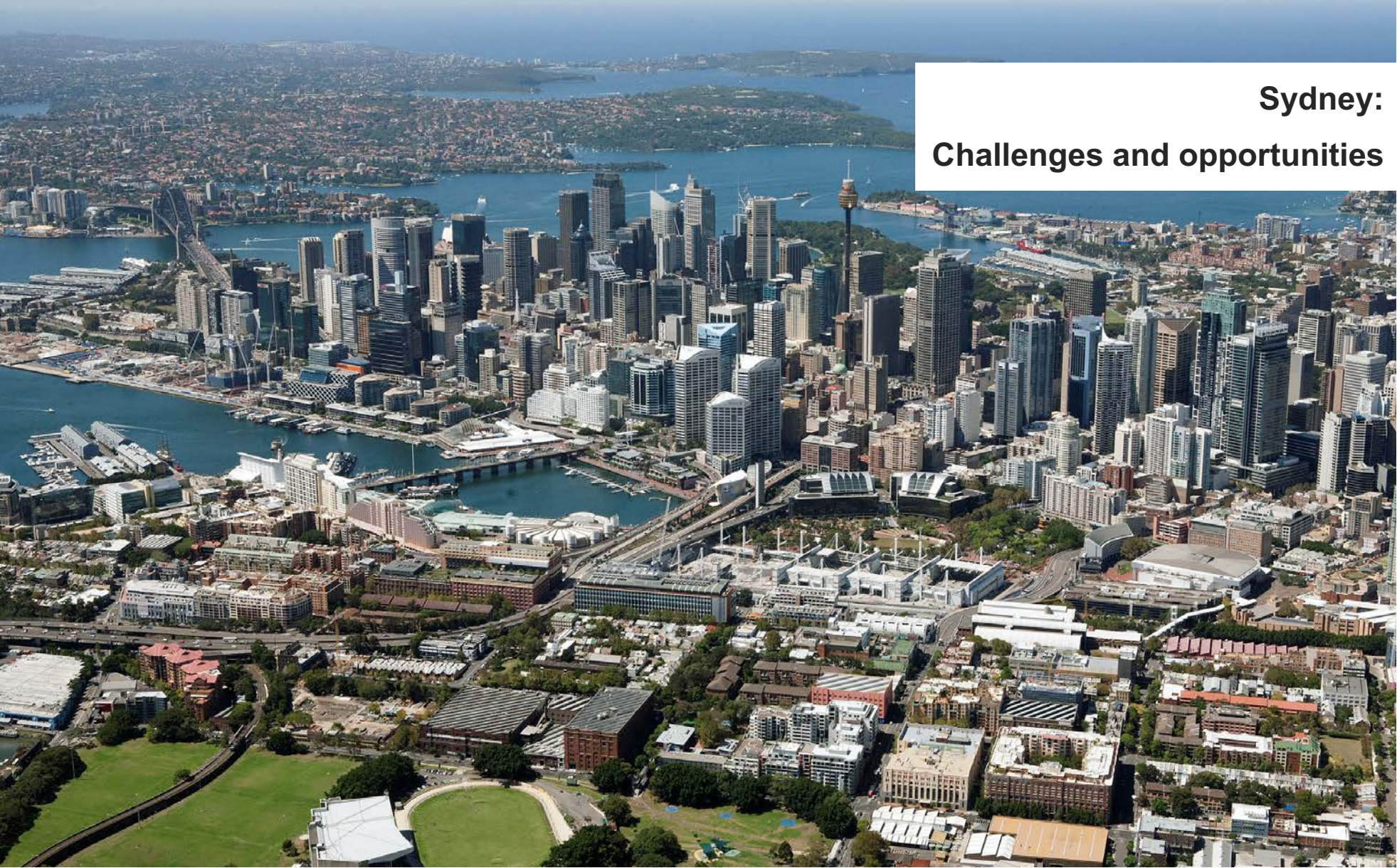
shaping healthy communities



# LAST MILE LOGISTICS: SYDNEY

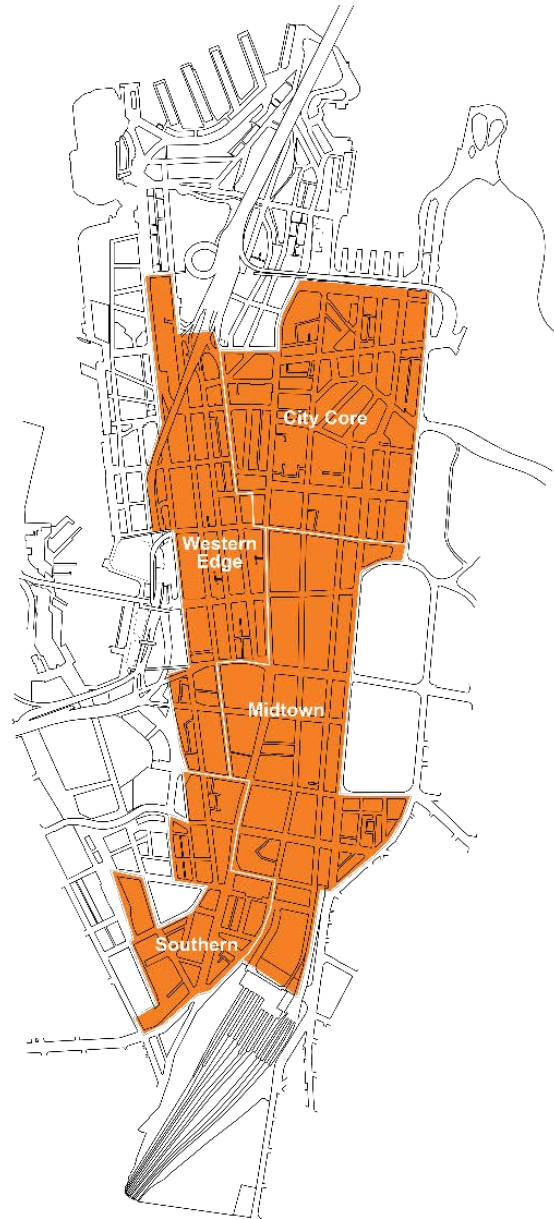
**BRYONY COOPER**



An aerial photograph of Sydney, Australia, showing the city's skyline, harbor, and surrounding areas. The Sydney Tower Eye is prominent in the center. The text "Sydney: Challenges and opportunities" is overlaid on the right side of the image.

## **Sydney: Challenges and opportunities**





**Long north-south blocks**  
**Short east west blocks**  
**Narrow streets**  
**Constrained geography**

---

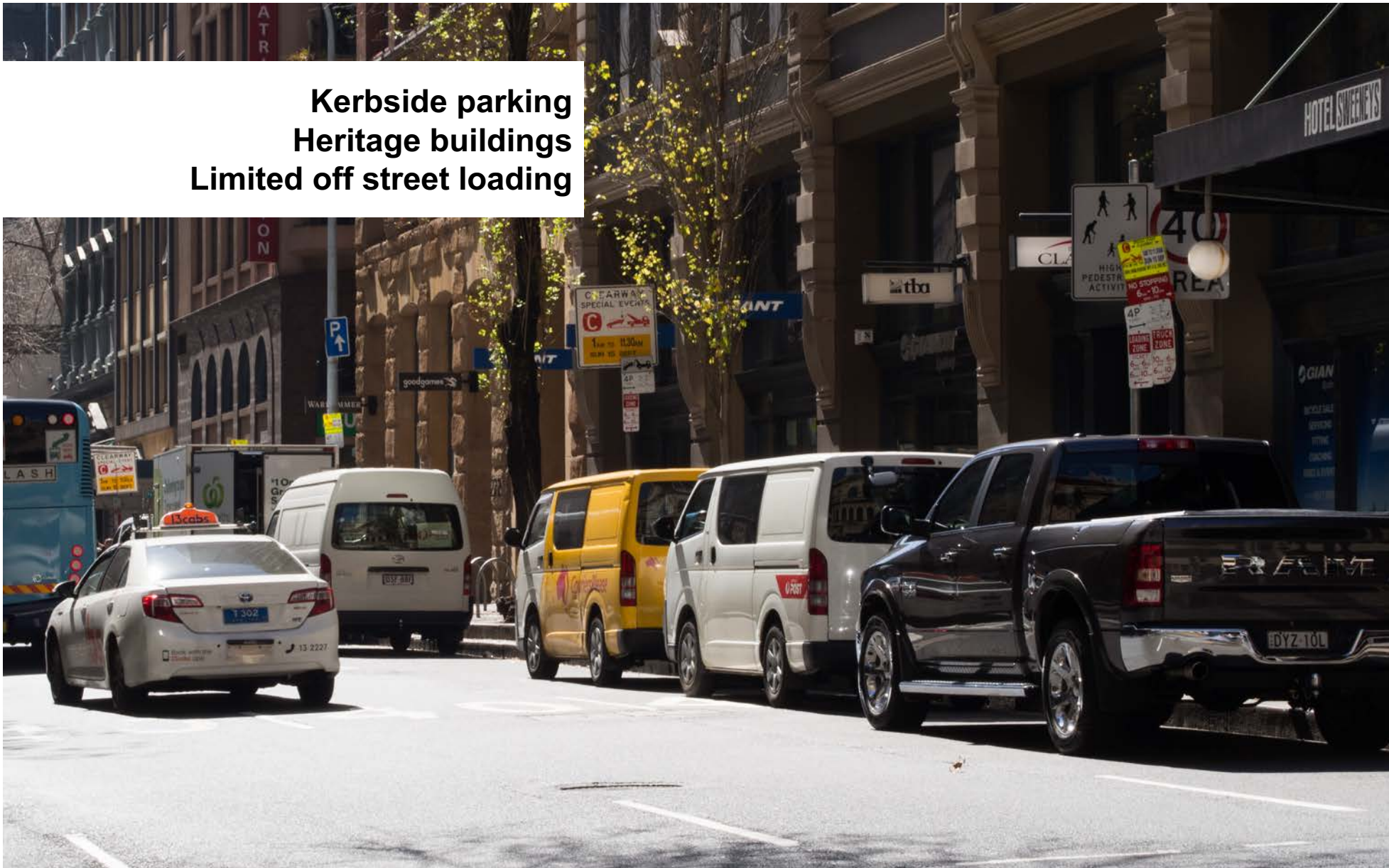
shaping healthy communities



**Over 1.3 million walking trips each day  
80% commuters use public transport  
350,000+ people work in the Sydney CBD**



**Kerbside parking**  
**Heritage buildings**  
**Limited off street loading**







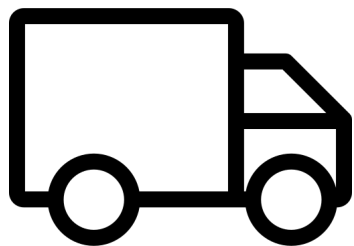
shaping healthy communities







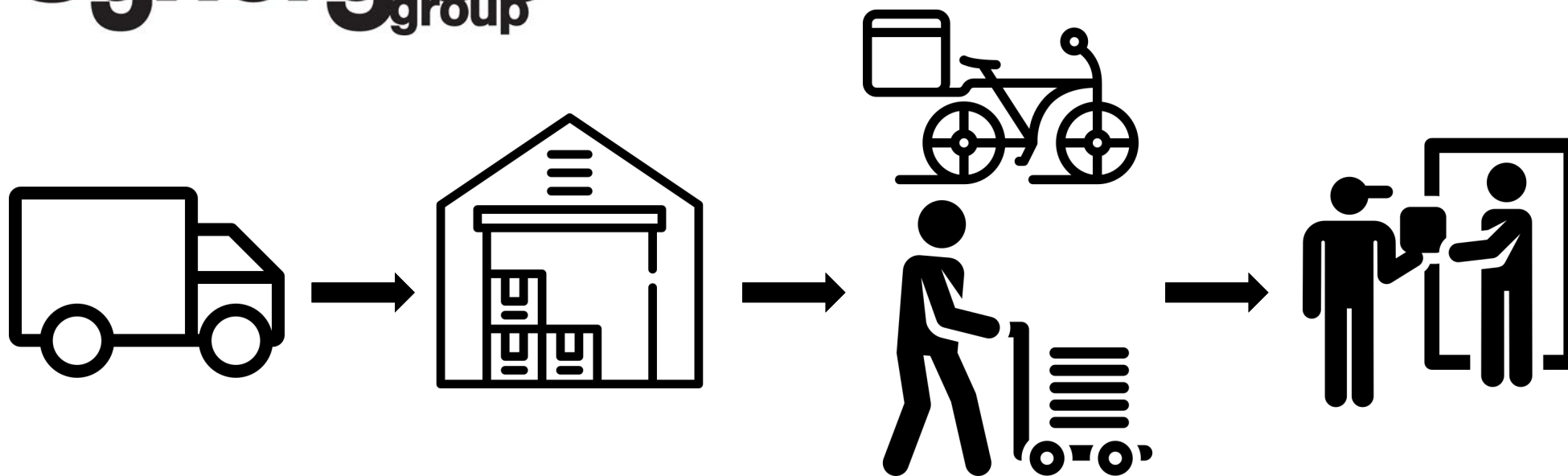




---

shaping healthy communities

Icons made by Freepik from [www.flaticon.com](http://www.flaticon.com)



---

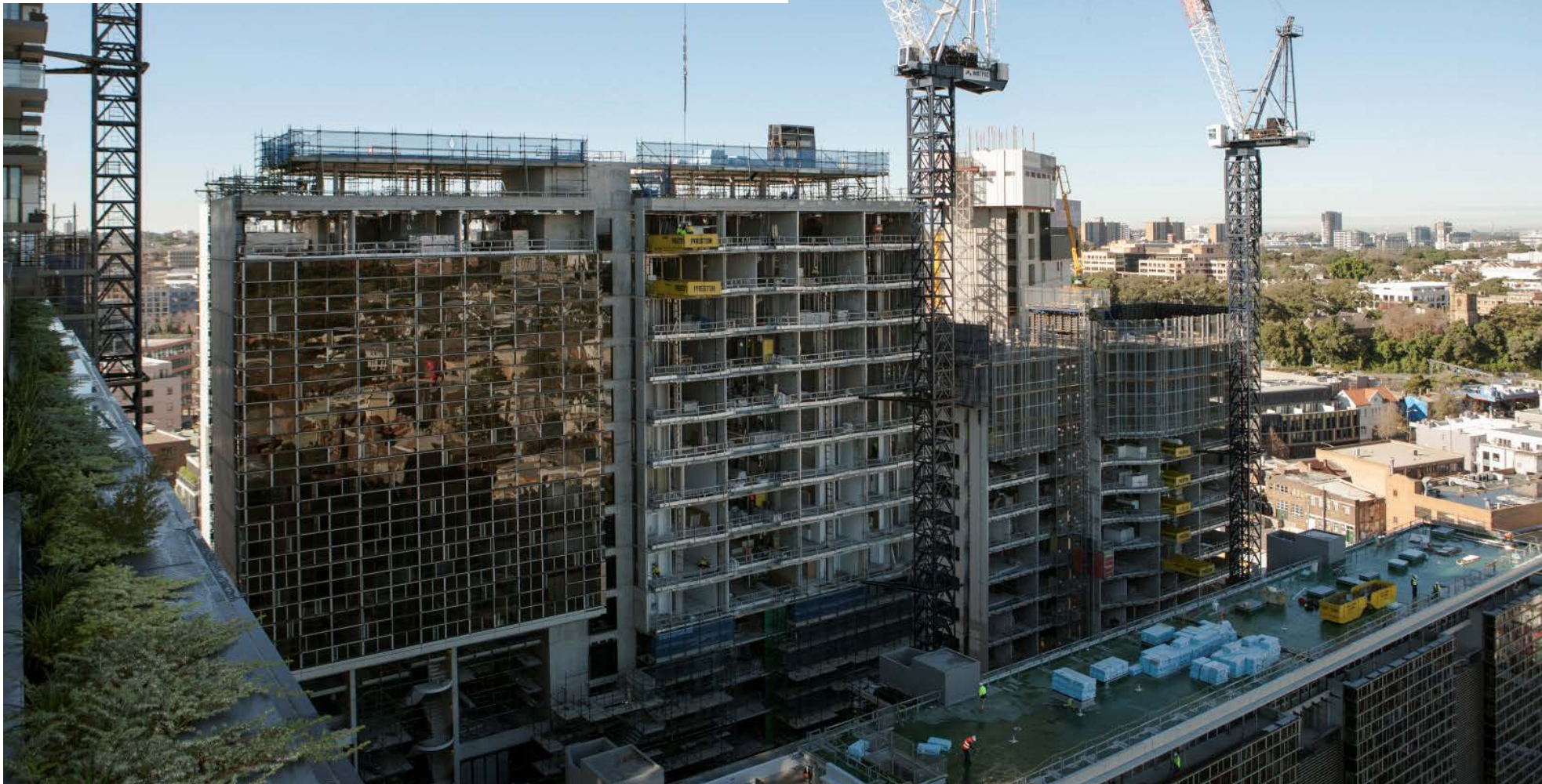
shaping healthy communities

Icons made by Freepik from [www.flaticon.com](http://www.flaticon.com)

Icon made by Smashicons from [www.flaticon.com](http://www.flaticon.com)



**New development can offer shared dock space and off street warehousing**





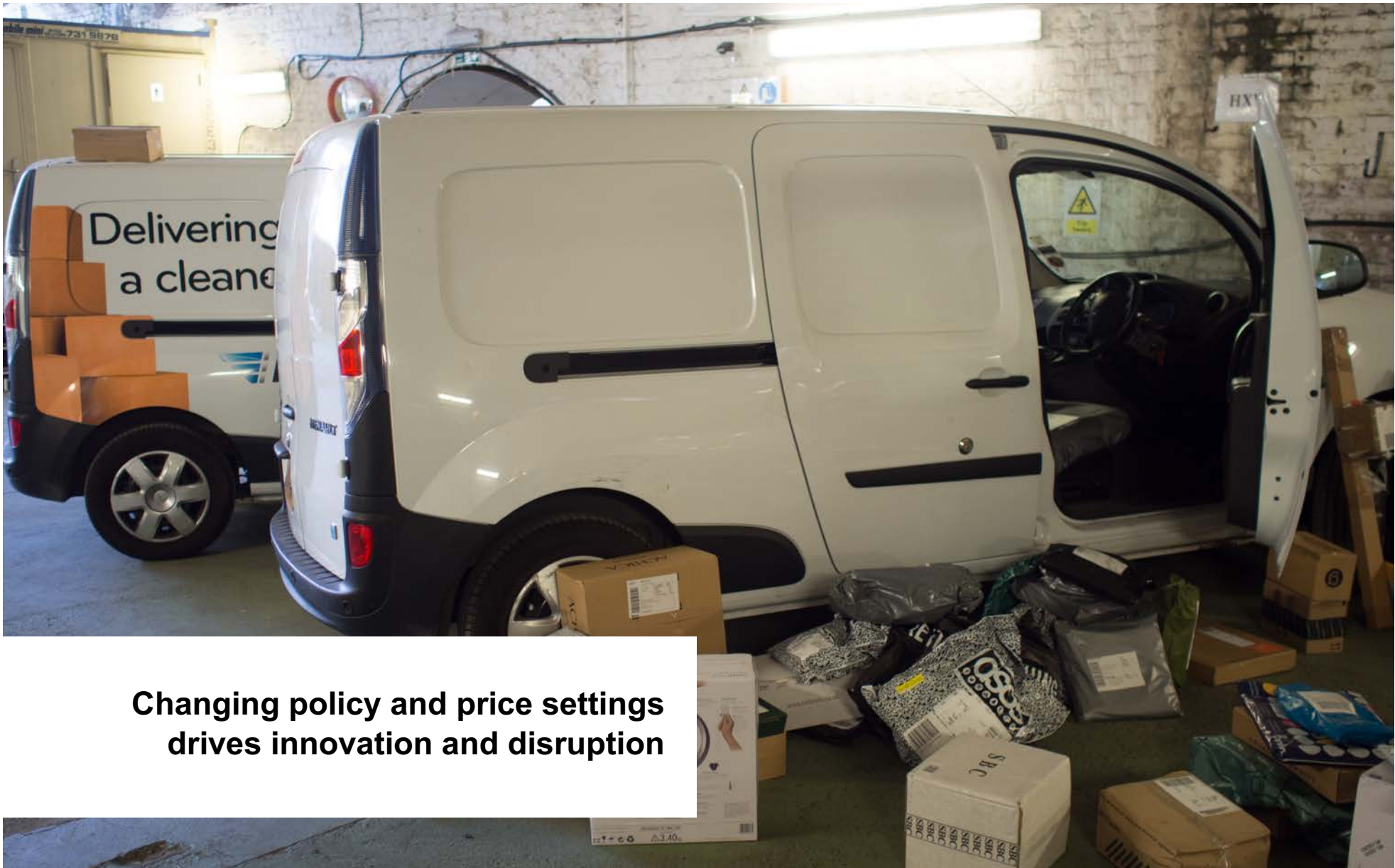
## Trials using public space







**Space for pedestrians and cyclists supports last mile  
12.5km dedicated cycleways**



**Changing policy and price settings  
drives innovation and disruption**





**Thank you.**

---

**shaping healthy communities**



[www.urbansynergiesgroup.org](http://www.urbansynergiesgroup.org)