



# Transformative Urban Mobility INITIATIVE



Institute for Transportation  
& Development Policy



WORLD  
RESOURCES  
INSTITUTE



# Unsustainable Transport Dynamics

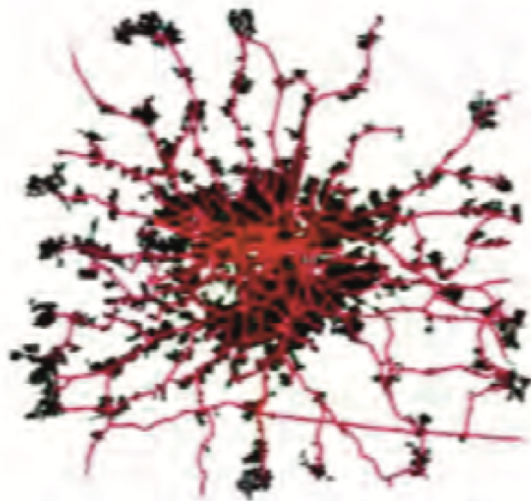
**28%** of global carbon emissions

**61%** of global oil demand

Doubling of emissions till **2050**  
[under BAU Scenarios]

More than **10 billion** trips per day  
[urban share rapidly increasing]

# Comparison: Low-carbon and high carbon transport city



**LONDON**

Pop 14,302,930  
GDP per capita 54,304\$

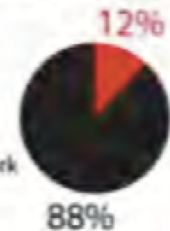
4,120 people per km<sup>2</sup> (average)  
36% population living 500m from  
rail based public transport network



**LOS ANGELES**

Pop 13,035,466  
GDP per capita 60,881\$

1,870 people per km<sup>2</sup> (average)  
12% population living 500m from  
rail based public transport network



# The Global Urban Mobility Opportunity

Access



Inclusion



Health



Climate





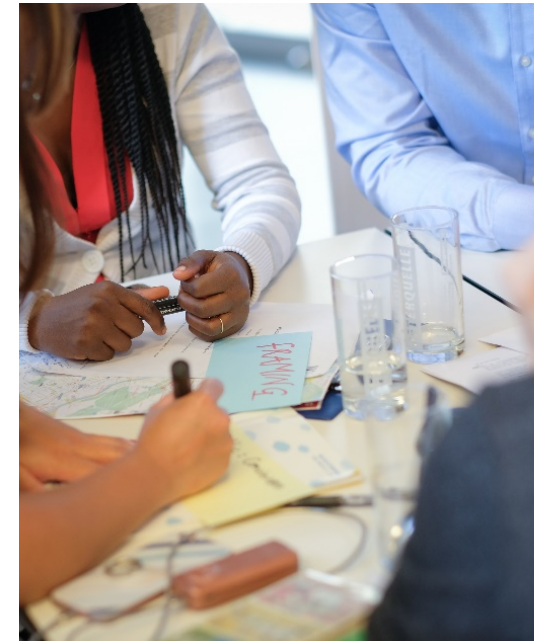
# The Global Urban Mobility Opportunity



Compact Urban  
Growth



Smart and Low Carbon  
Transport  
Infrastructure



Coordinated Urban  
Governance: Integrated  
authorities, transport  
planning

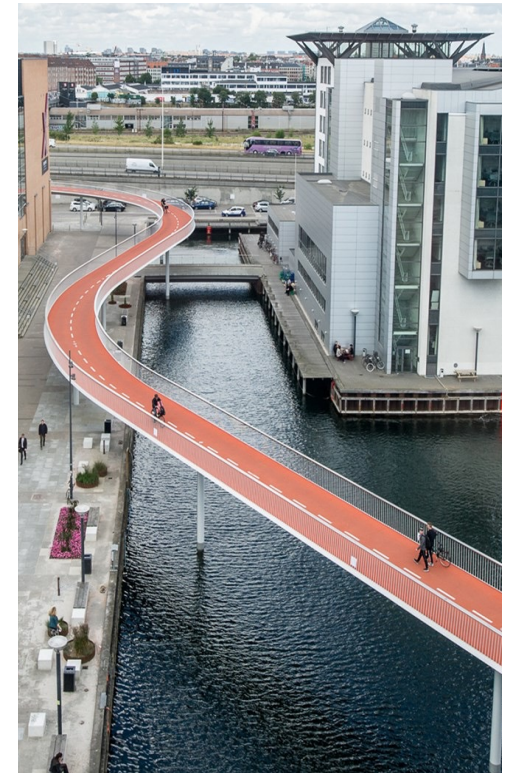
# 3 Global Trends which:

- Have a major influence on social, environmental and economic landscape over next decade
- Permeate across all sectors of economy and society
- Showing strong links to other megatrends, fundamentally disrupt industries and shape societies

Non-Motorized Transport & Public Transport

Digitalization & Data Based Decision Making

Electrification of Transport



The leading global **implementation initiative supporting city makers** in developing and emerging countries in the **transformation** towards **sustainable urban mobility**.



# TUMI - A 3D Approach to Urban Mobility

## Pilot Projects



- Supporting innovative pilot projects with measurable impacts
- Scalable and replicable solutions for sustainable urban mobility

## 1500 Urban Leaders



- Ambitious training initiative
- Supporting leaders in transformation processes
- Learning, networking, reflecting
- Promoting partnerships

## Financing



- Mobilization of more than EUR 1 billion by KfW in cooperation with other donors

All 3 pillars are closely linked and support each other.



# Work Programme



Transformative  
Urban Mobility  
INITIATIVE



# Executive Summary



Transformative  
Urban Mobility  
INITIATIVE

## Capacity Building

**+1500  
Urban Leaders**  
trained so far

Germany ITF +80  
Leaders

Austria – Academy of  
Urban Mobility +30  
Leaders

Egypt +60 Leaders

Senegal +50 Leaders

Brazil EMDS  
–180 Leaders

Ecuador Habitat III  
–30 Leaders

Taiwan –30 Leaders

Thailand –70 Leaders

Chile –50 Leaders

Tanzania –10 Leaders

Phillipines –60 Leaders

## Financing

S Train; Tunis, Tunisia  
(KfW)

Metro Line; Quito  
Ecuador (CAF)

BRT; Niteroi, Brazil  
(CAF)

IST, Huaiainan, China  
(KfW)

Urban Transport  
Kochi, India (KfW)

MRT; Coimbatore,  
India (KfW)

Light Rail:  
Buenos Aires,  
Argentina (CAF)

**Up to  
€ 1.4Bn**  
Committed (KfW)

## Lena Stiller

Lena.stiller@giz.de

**Transport Advisor at Deutsche Gesellschaft  
für internationale Zusammenarbeit (GIZ)**



## Daniel Moser

Daniel.Moser@giz.de

**Management Head of the Transformative  
Urban Mobility Initiative**

