



**Santa Fe**  
Capital

**EcoLogistics Community Webinar**

# **Daring Cities Cornerstone Event**

***Moving Goods: Low Carbon Action Plan for Urban Freight***

María Cecilia Lazzaroni

Executive Director of Mobility Planning



# Urban Plan

## Secretariat of Urban Development

Urban  
Planning



Mobility



Public  
space

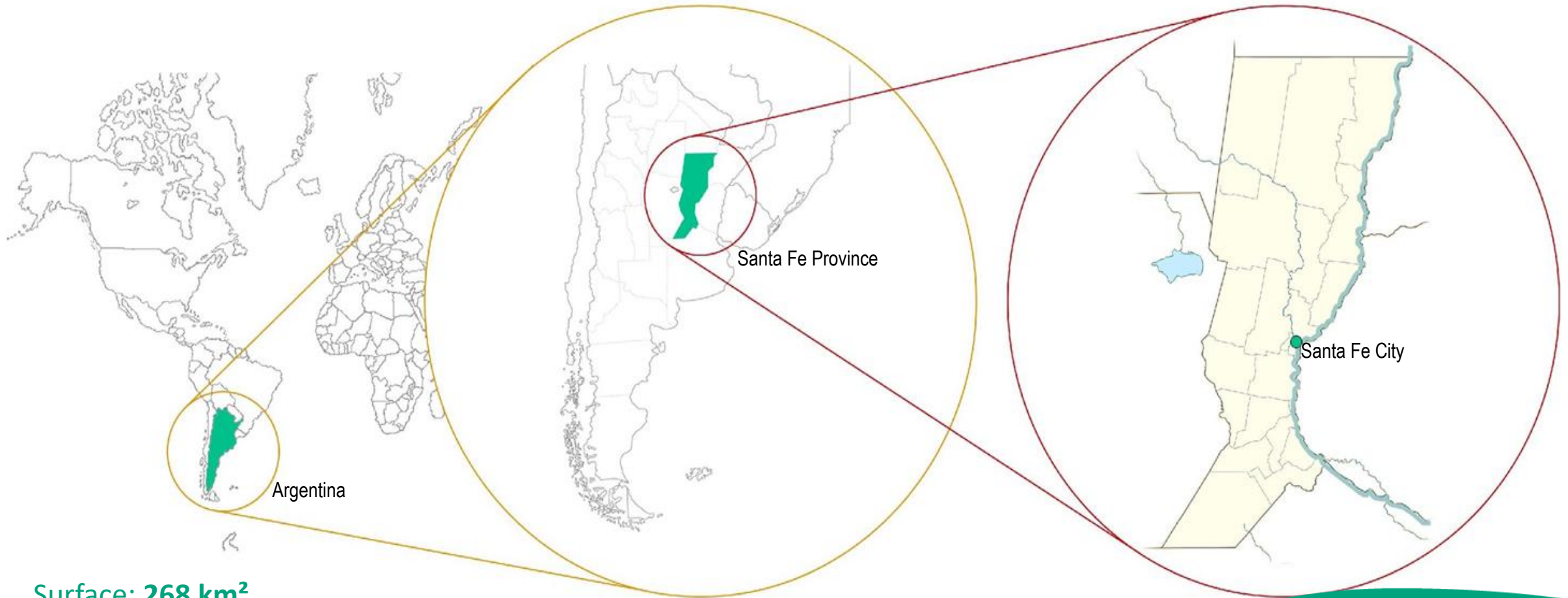


Heritage



**Santa Fe**  
Capital

# Santa Fe City



- Surface: **268 km<sup>2</sup>**
- Population (2010)
  - Total **401 544 hab.**
  - Density **1498,3 inhab/km<sup>2</sup>**
  - Metropolitan area **510 000 hab.**



**Santa Fe**  
Capital

# Low Carbon Action Plan for Urban Freight

## LCAP-UF STRATEGIC AXES

### REGULATION AND CONTROL

- #Specific regulations.
- #Strengthening of Control.

### RATES AND TAX INCENTIVES

- #Incentive plan
- #Differential rates
- #Green Seal Program

### INFRASTRUCTURE

- # Loading and unloading
- # Efficient use
- #Distribution centers



**Santa Fe**  
Capital

# Low Carbon Action Plan for Urban Freight

## **AXIS 01: Regulation and control**

### **OBJECTIVES:**

1.1 Generate specific regulations for freight transportation and logistics under climate change policies.

1.2 Strengthen the control system for cargo and logistics activities in the city, aligning it with the local climate action plan.

### **Actions**

1.1.1 Propose improvements and/or new regulations to regulate the freight activity and include it in urban planning.

1.2.1 Improve and unify the current freight transport control system.

1.2.2 Improve the coexistence of all modes of mobility focusing on the reduction of emissions.



**Santa Fe**  
Capital

# Low Carbon Action Plan for Urban Freight

AXIS 02 – Rates and Tax Incentives	
<b>OBJECTIVES:</b> Incentivize companies to implement changes to reduce GHG emissions through differential tariffs and tax incentives.	
Actions	
2.1.1. Implement a system of differential local tax rates for companies that make changes to reduce GHG*.	
2.1.2 To develop an incentive and benefit plan for companies that join this Plan.	
2.1.3 Develop the "green seal" program to recognize companies that comply with current environmental regulations and adhere to this Plan **	

\* Replacement of units, change of fuel or technology, smaller units, etc.

\*\* Training, resource management, waste management, etc.



**Santa Fe**  
Capital

# Low Carbon Action Plan for Urban Freight

## AXIS 03 - Infrastructure

### OBJECTIVES:

3.1 Improve existing road infrastructure to ensure efficient use of the network in terms of GHG emissions

### Actions

3.1.1 Improve the infrastructure of the city's exclusive loading and unloading zones. \*

3.1.2 Define structural actions to ensure the efficient and safe use of the network.

3.1.3 Study the implementation of distribution centers in the city

\*location, amount, infrastructure, signals, etc. .



**Santa Fe**  
Capital



# Pilot Project

General Objective

**Reduce gas emission effects attributed to freight transportation  
in the Ciudad 30 area**

Major approaches:

The creation of  
the first "Urban  
Distribution  
Center" for  
deconsolidation  
of cargo.

The organization  
and optimization  
of the loading  
and unloading  
docks.

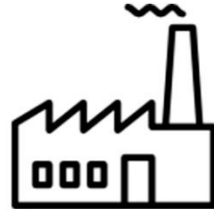
# Mobility Pact

## Local Working Group Ecologistics

Local  
Government



Private  
Sector



Institutions



Academy

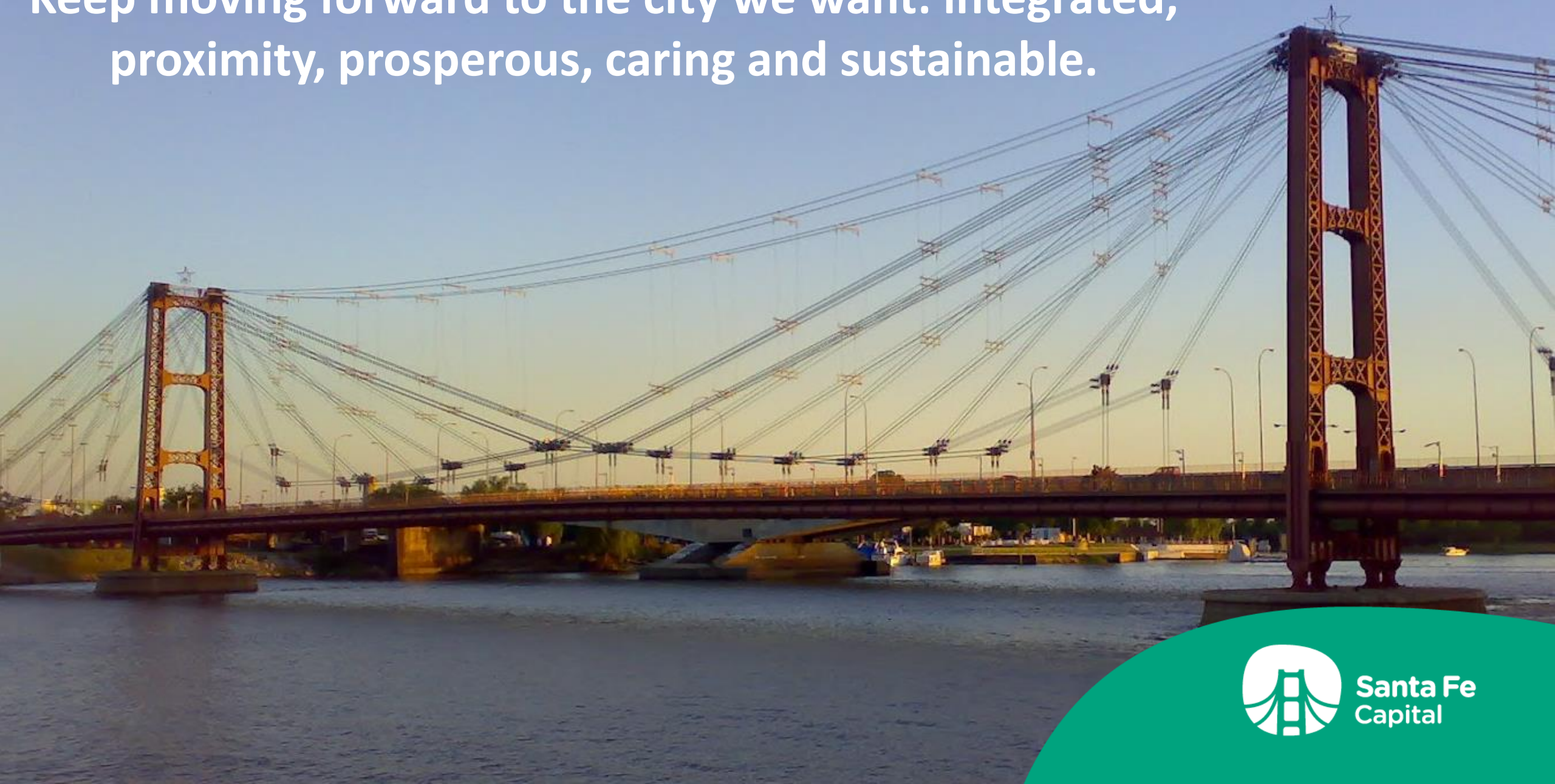


Society



**Santa Fe**  
Capital

Keep moving forward to the city we want: integrated,  
proximity, prosperous, caring and sustainable.





**Santa Fe**  
Capital