

Assessment of Existing Freight Scenario and Strategy Planning for Sustainable Urban Freight in Panaji

Supported by:



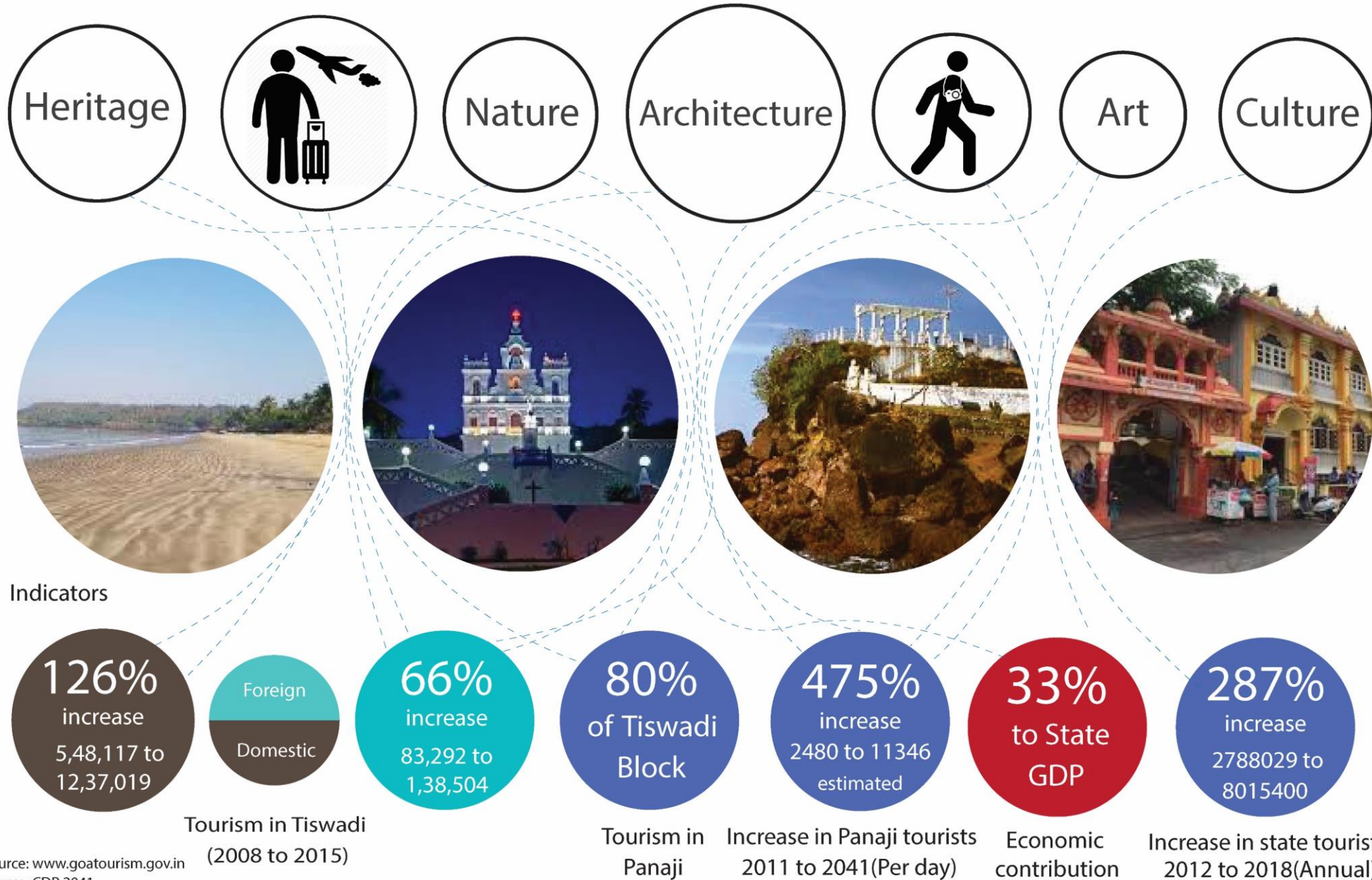
Federal Ministry
for the Environment, Nature Conservation
and Nuclear Safety

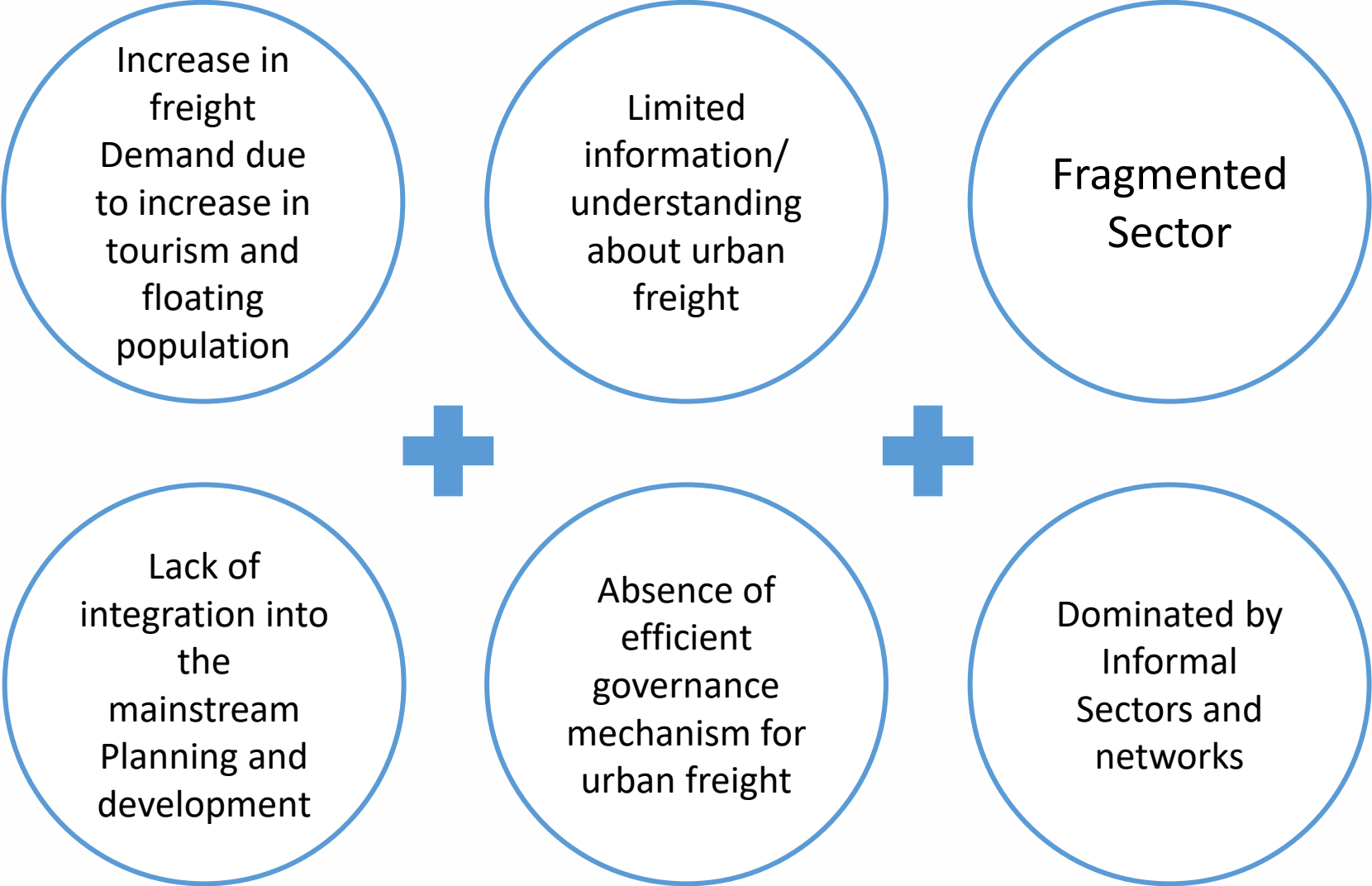
EcoLogistics
Low carbon freight for sustainable cities

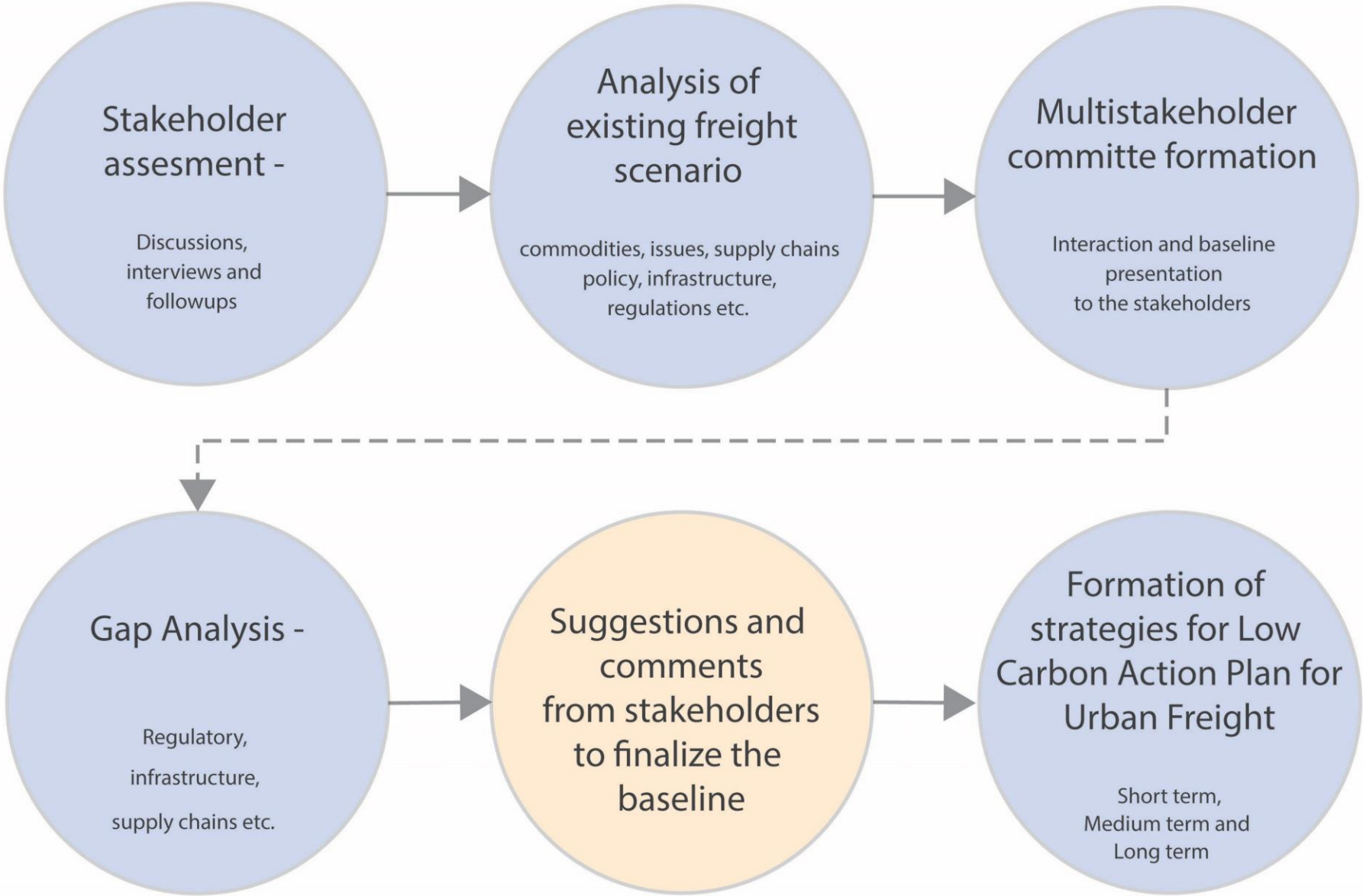


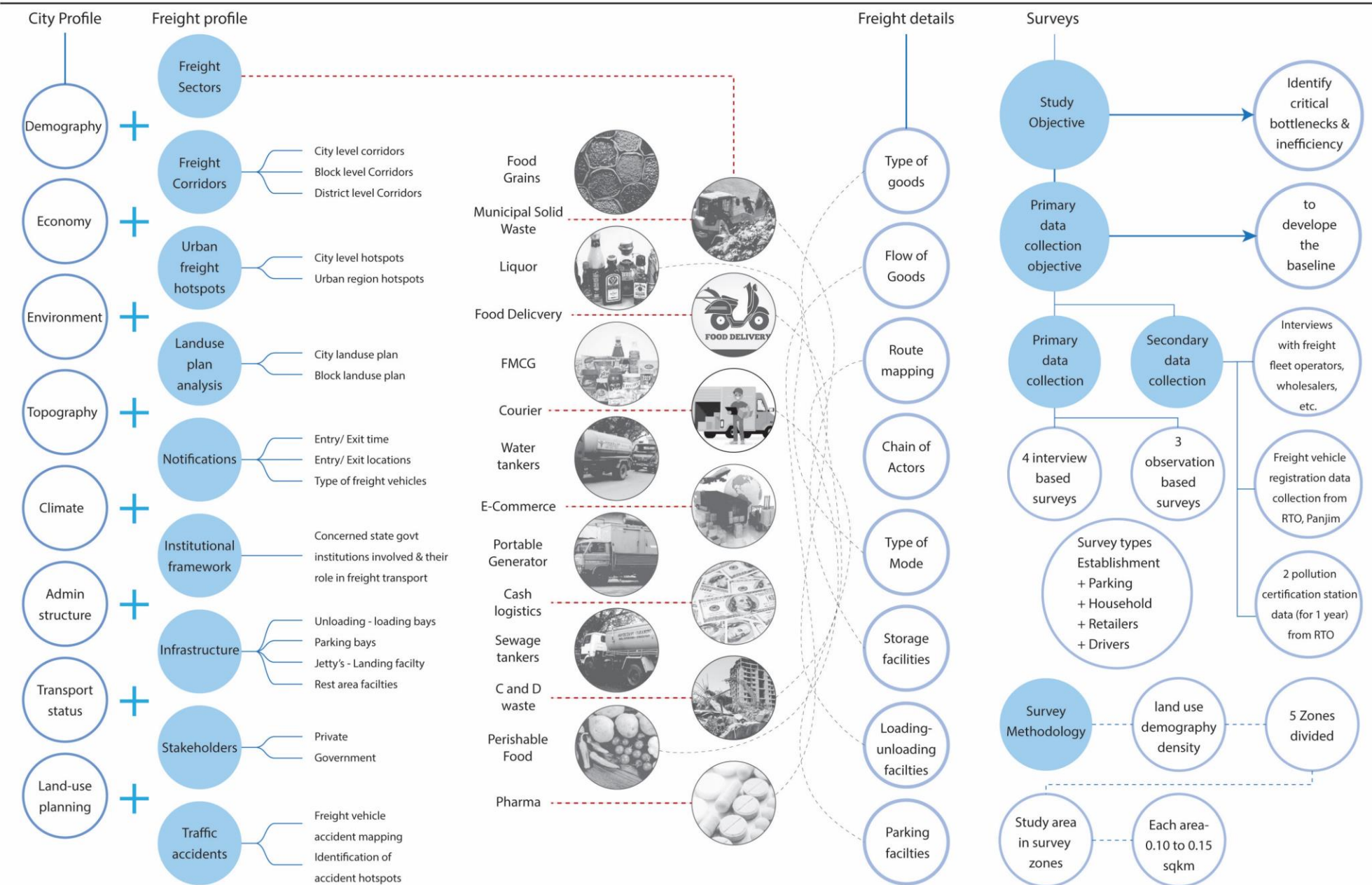
Local Governments
for Sustainability
SOUTH ASIA











Forward Logistics

Reverse Logistics



Food grains



Perishable food



Liquor



FMCG

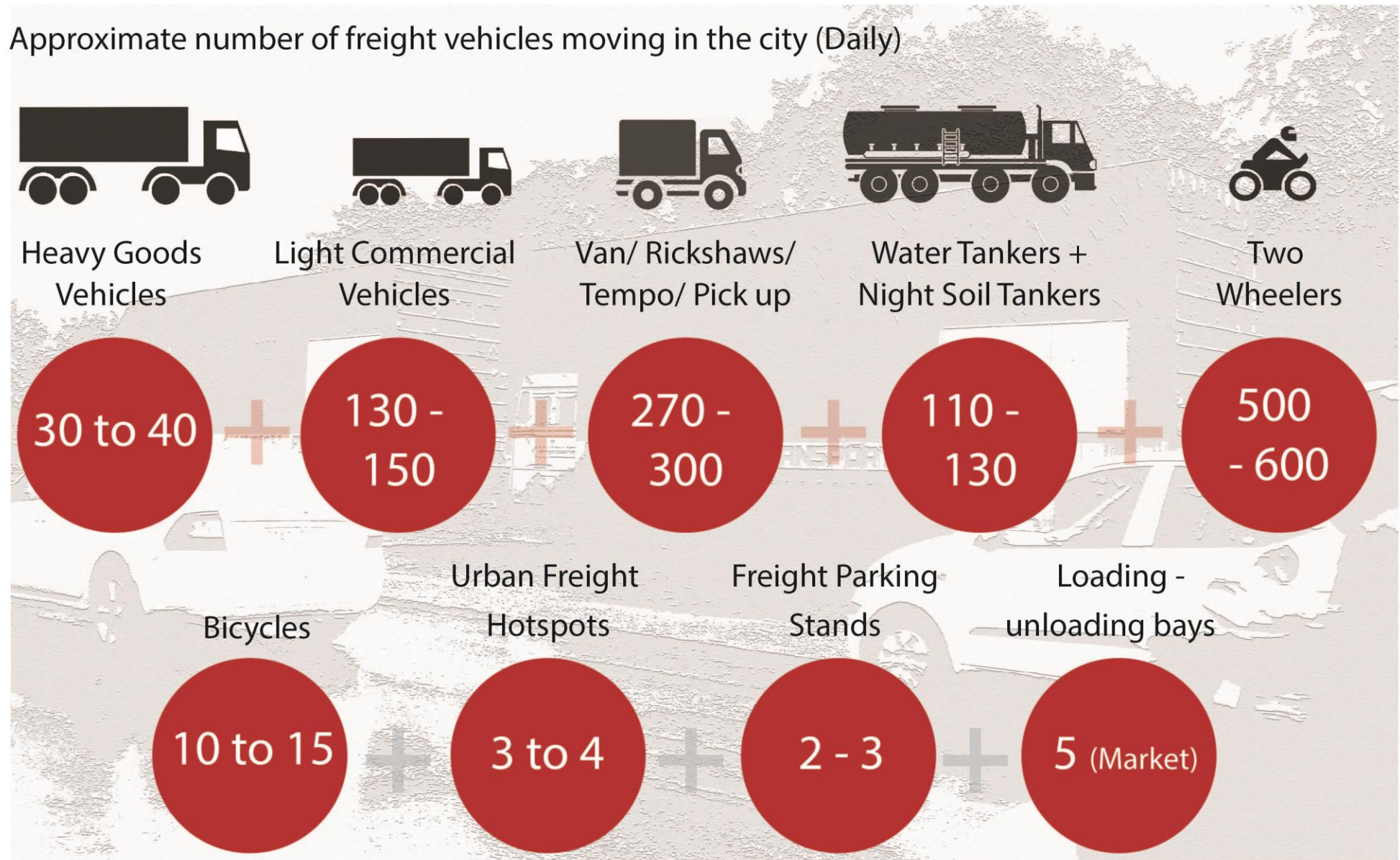


Sewage



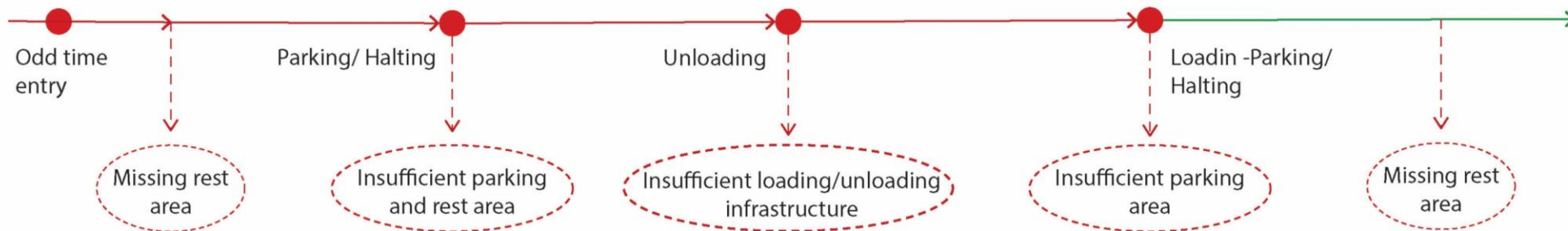
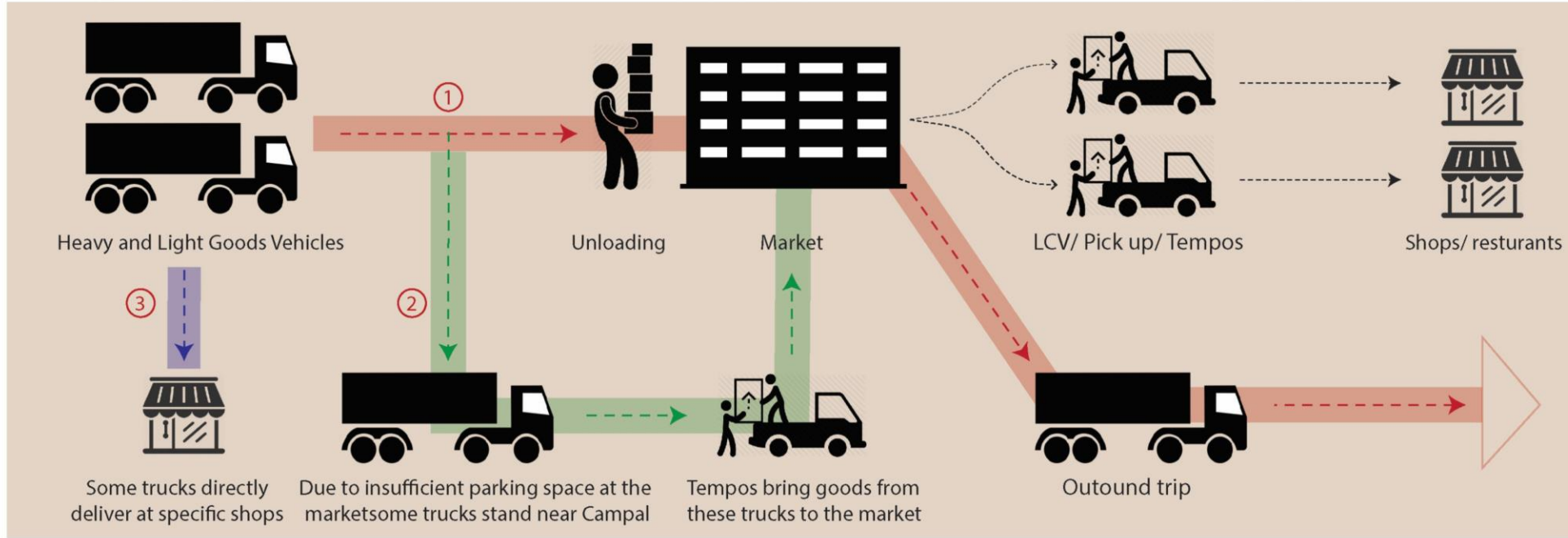
Municipal Solid Waste

Approximate number of freight vehicles moving in the city (Daily)



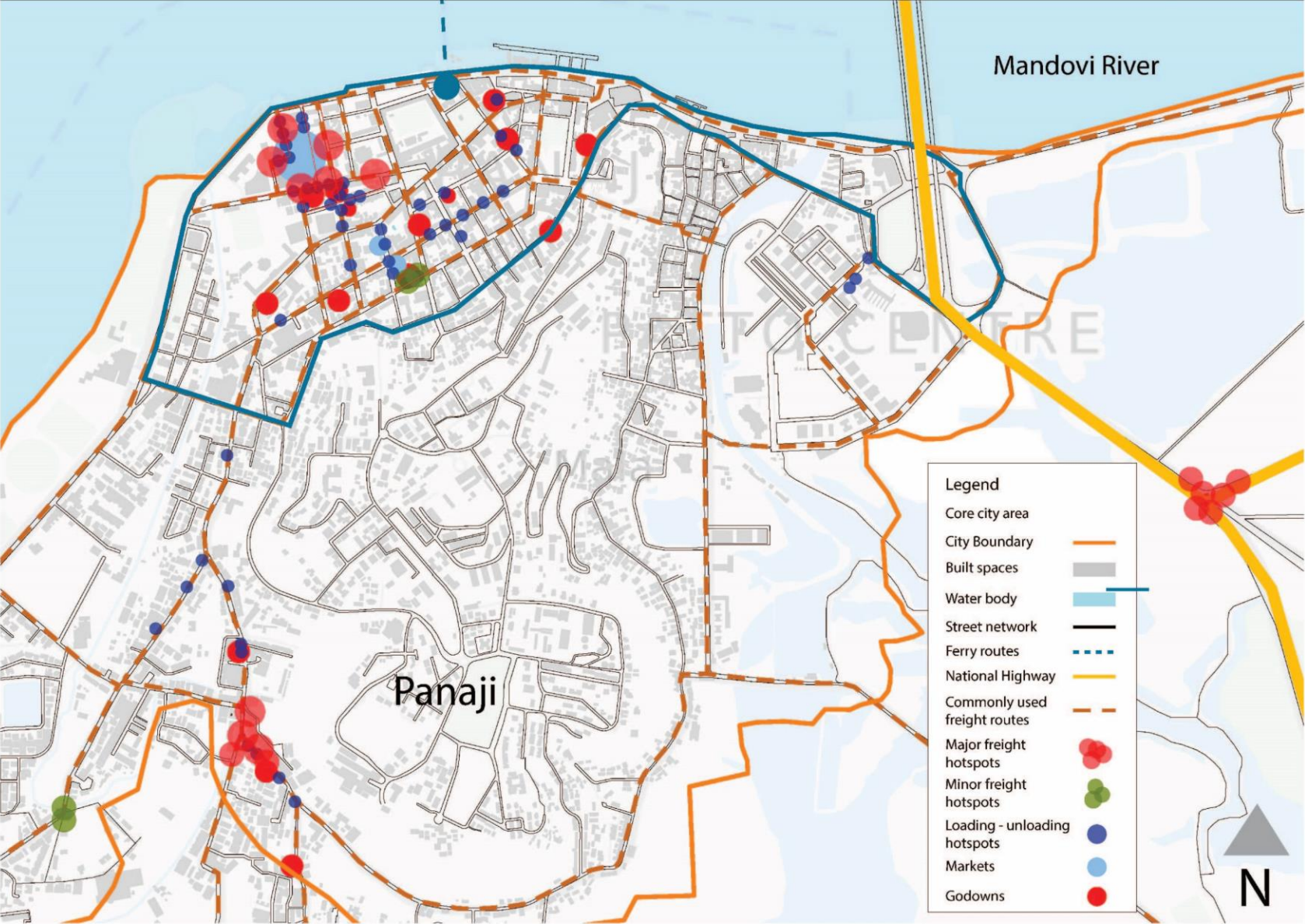
Types of freight movement - examples

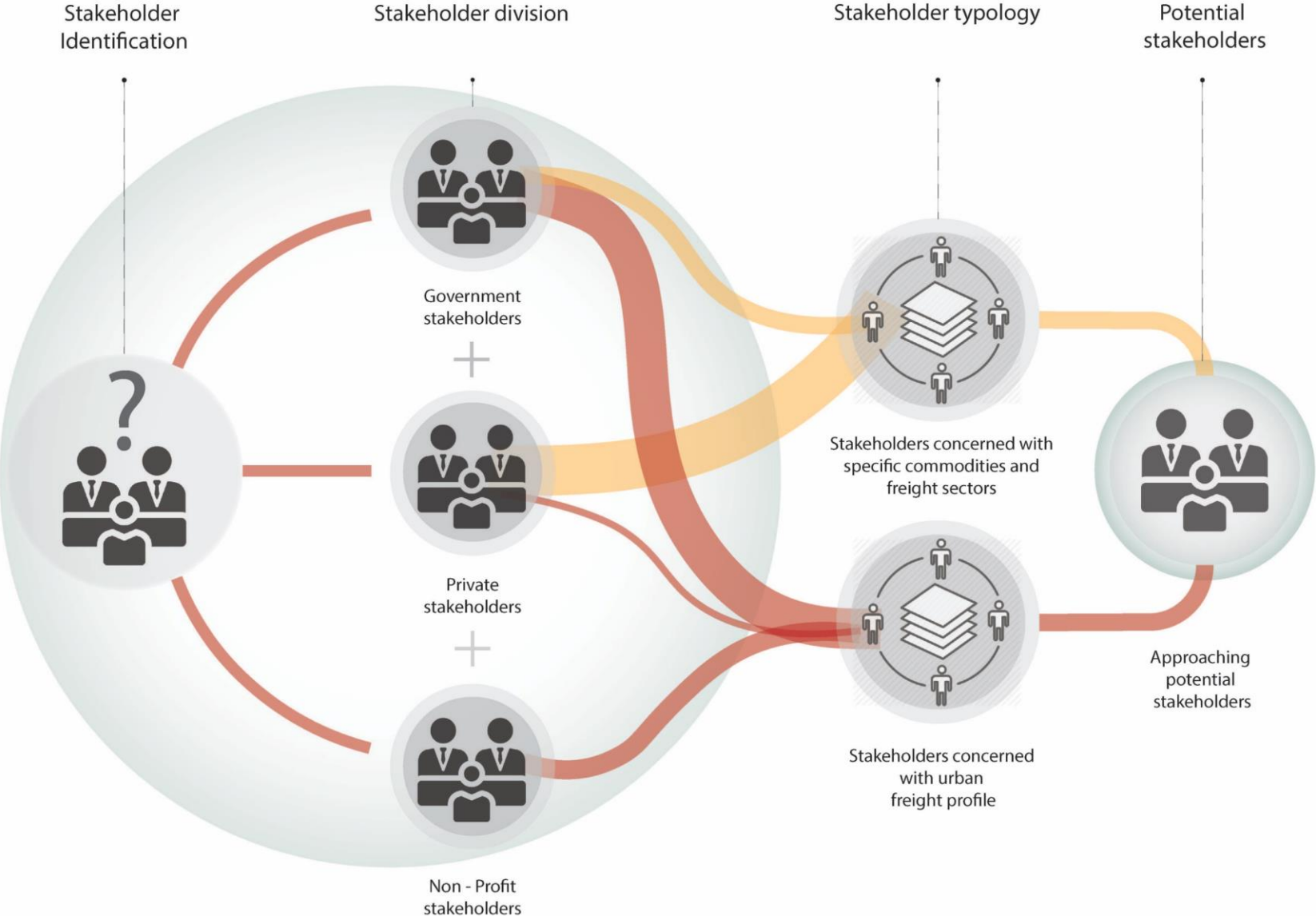
Fruits/ vegetables

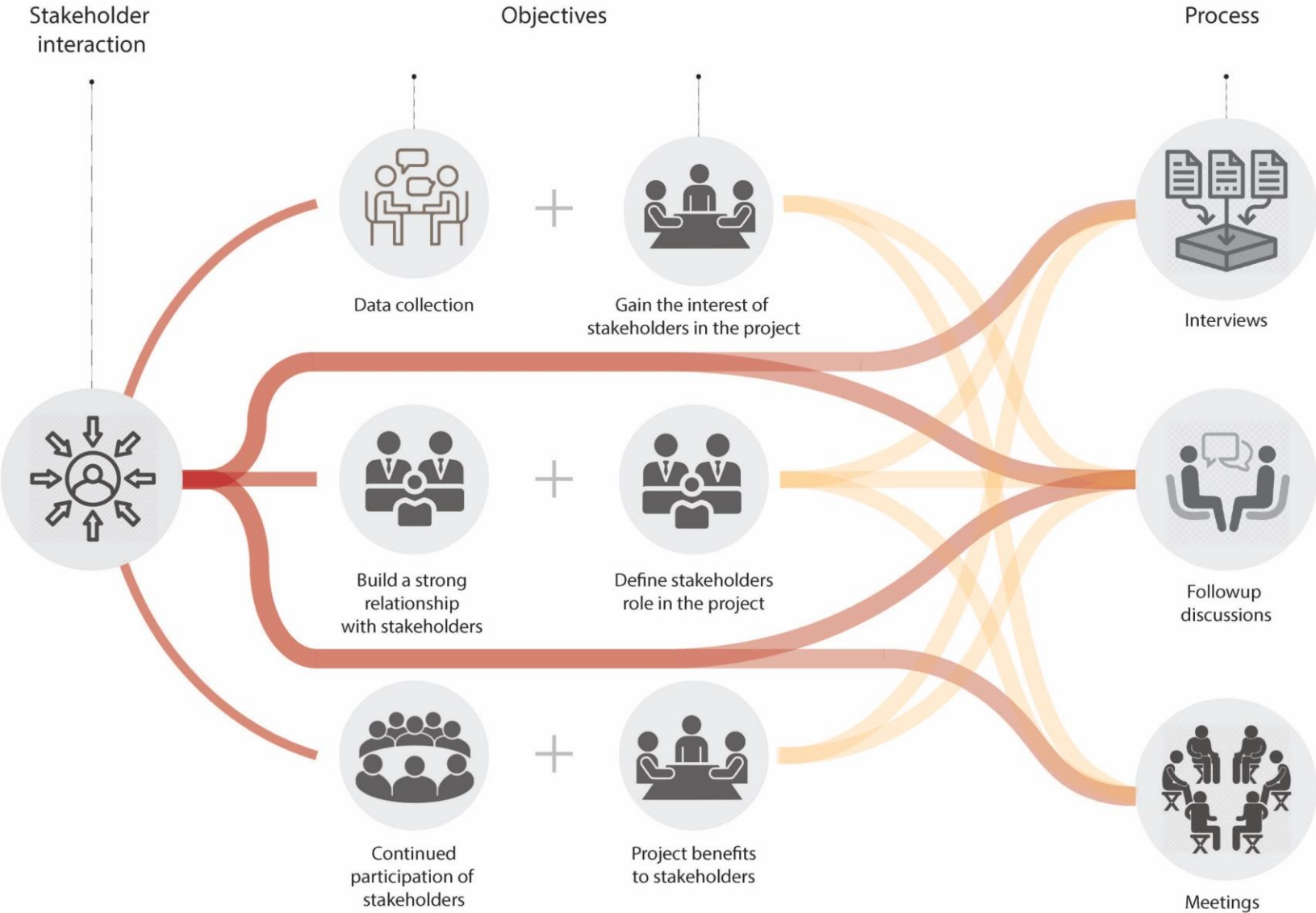


Legend

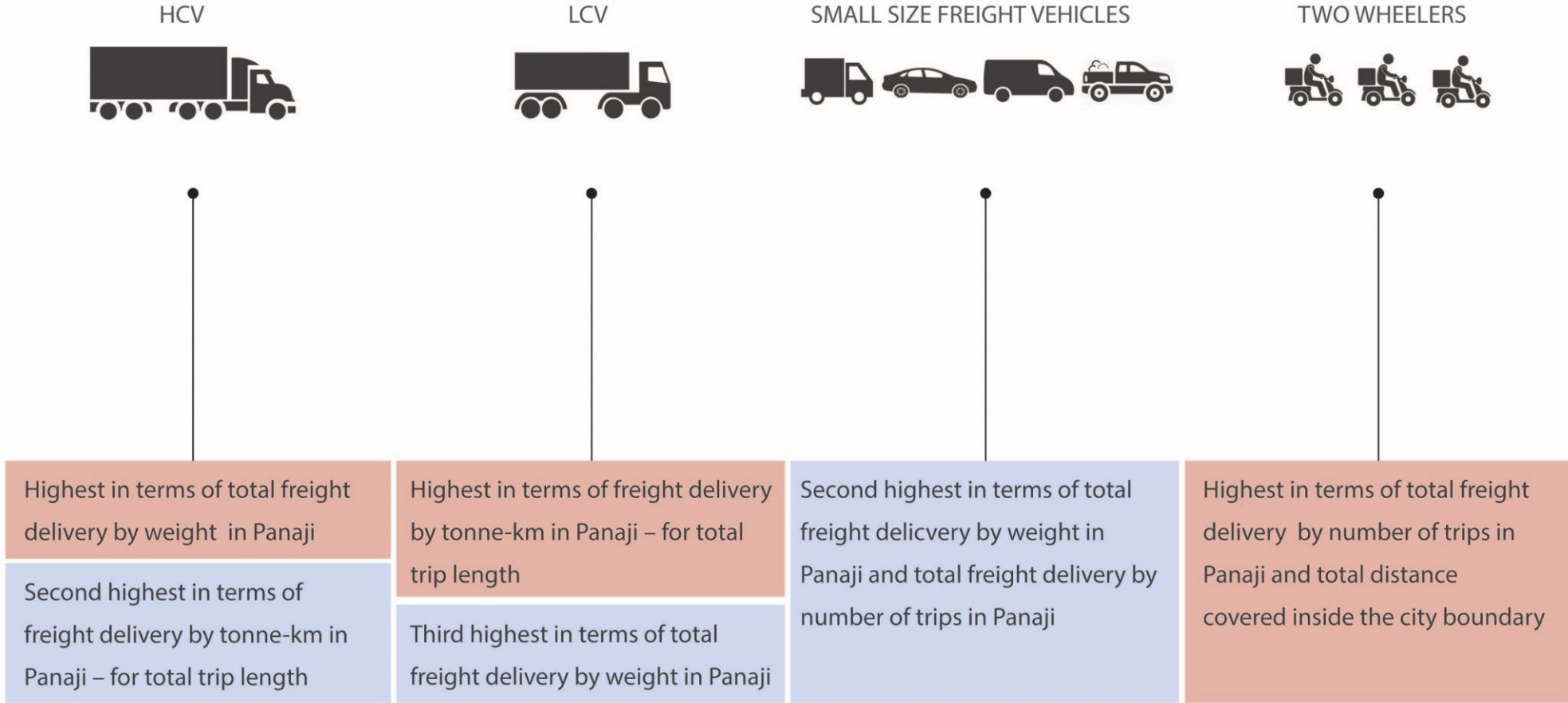
- Goods flow 1
- Goods flow 2
- Goods flow 3

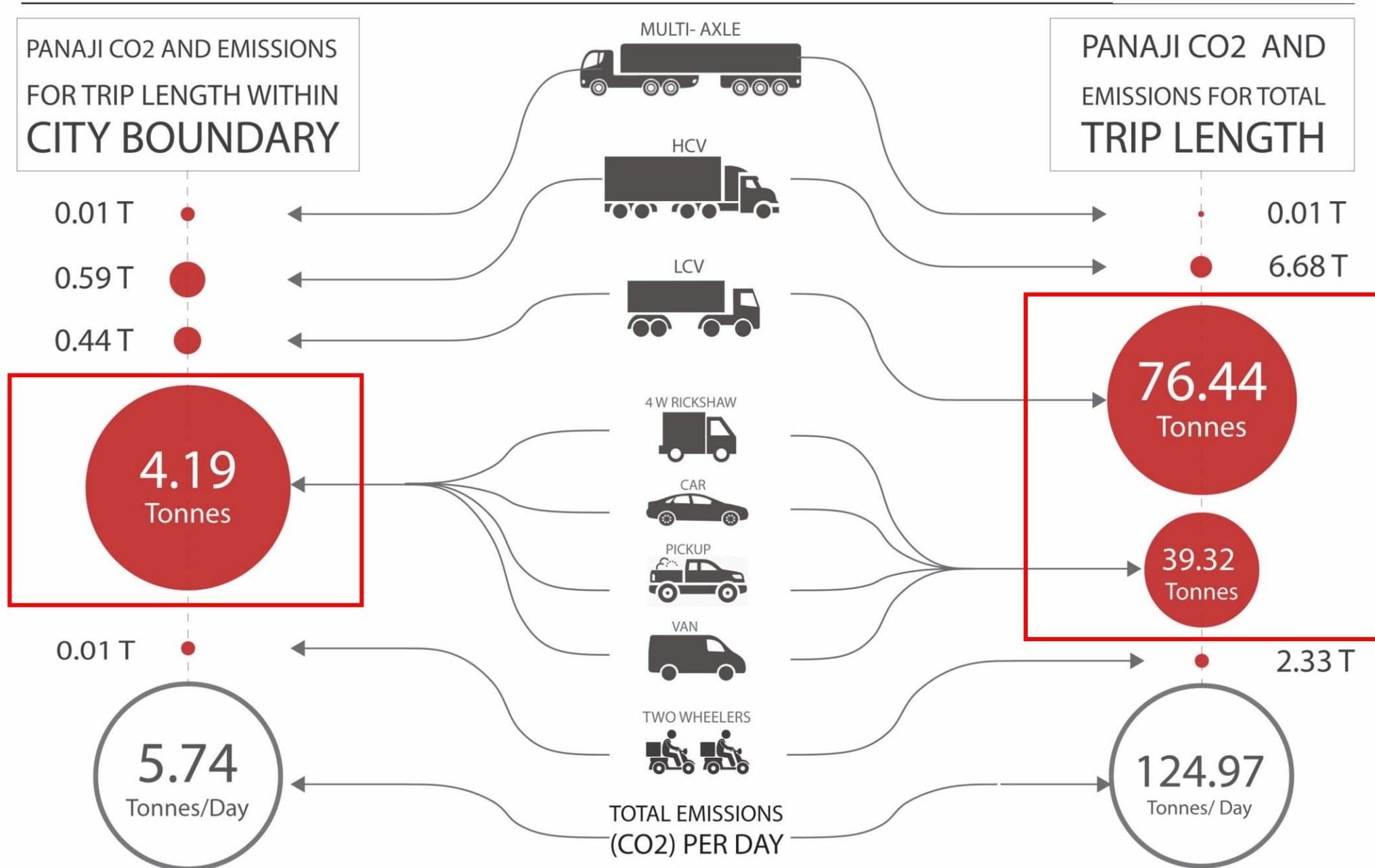


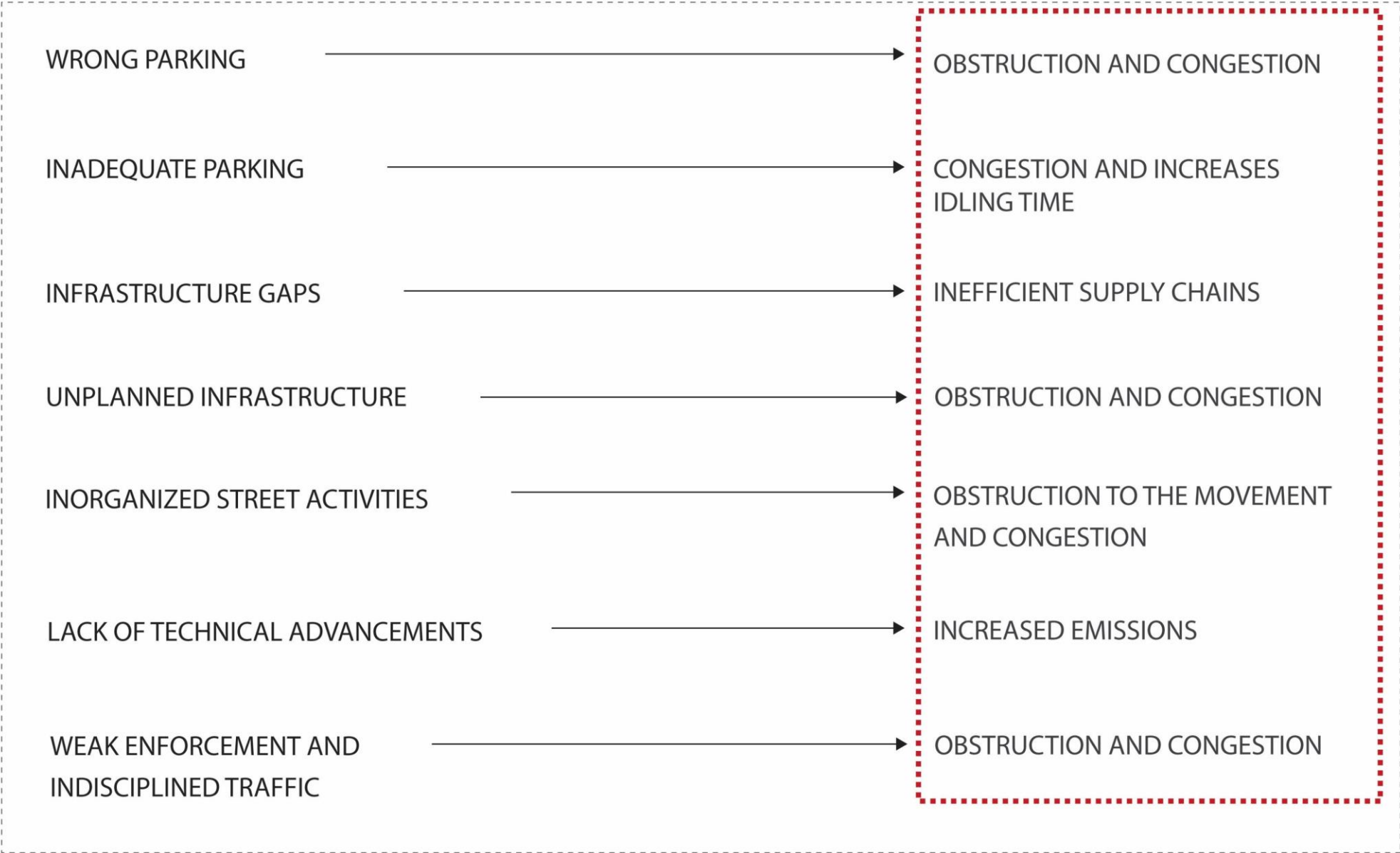


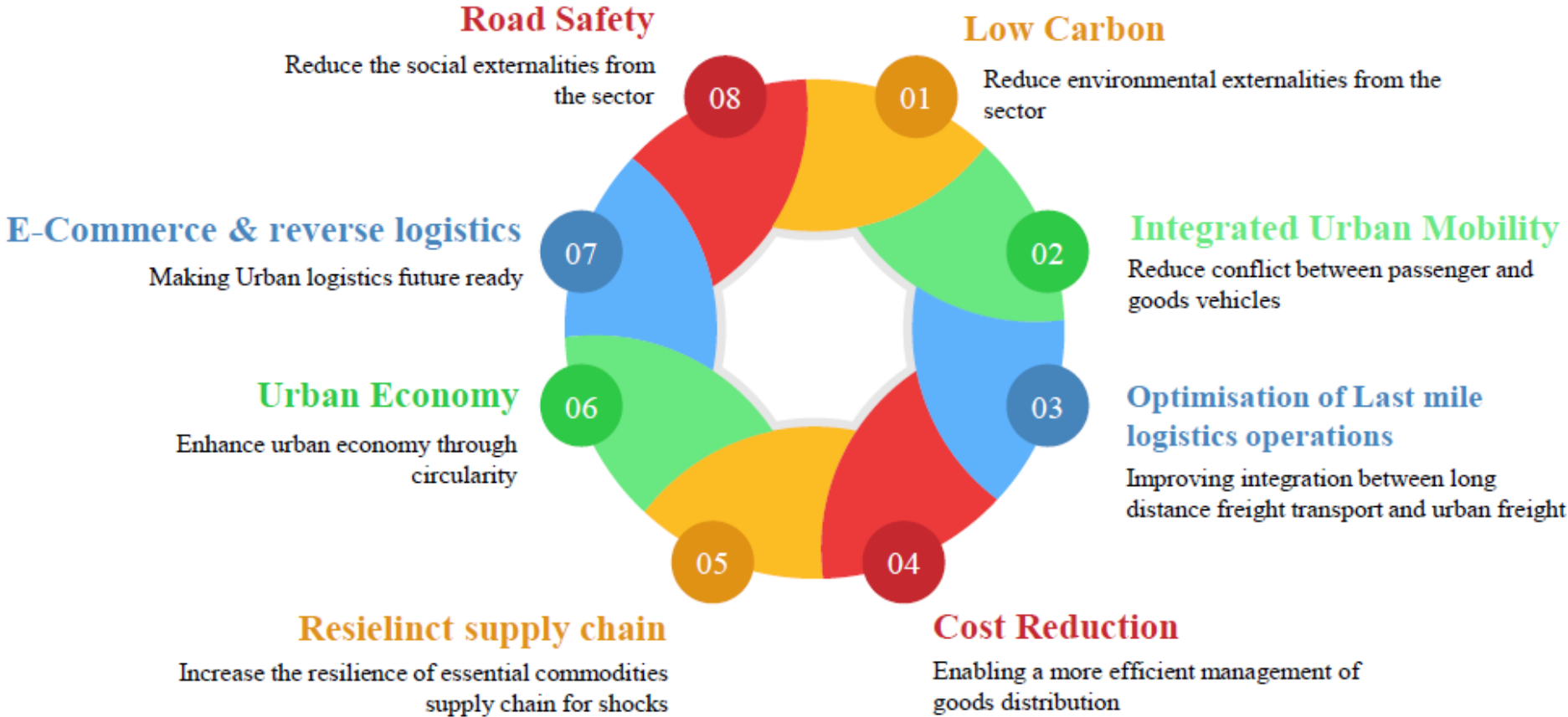


Freight indicators according to the type of vehicles









Improved public transport



Intergated Transport plan



Promote Non - motorized transport



Climate Action Planning



Better land use planning



Smart Parking



Reduced emissions from Solid waste collection vehicles



Improved Road Safety



Improved traffic signage network



Reduced Road Congestion



Improved pedestrian infrastructure




Promote bicycling



Reduced transport emissions

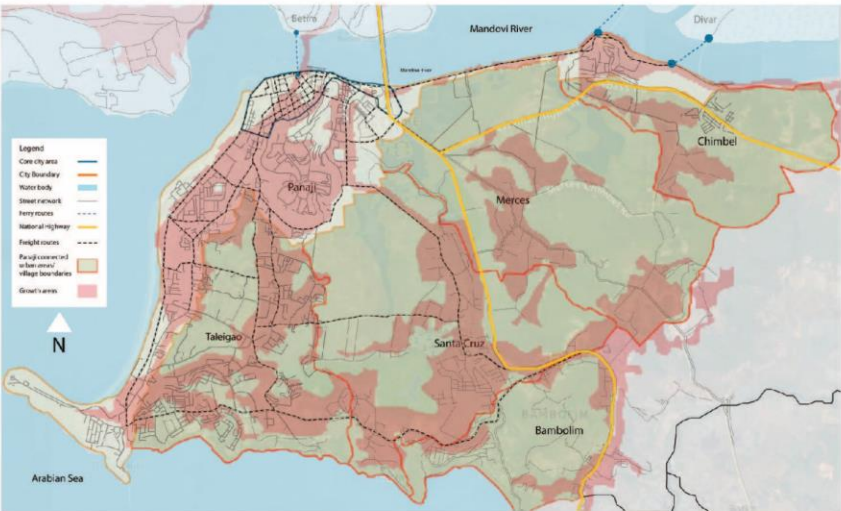
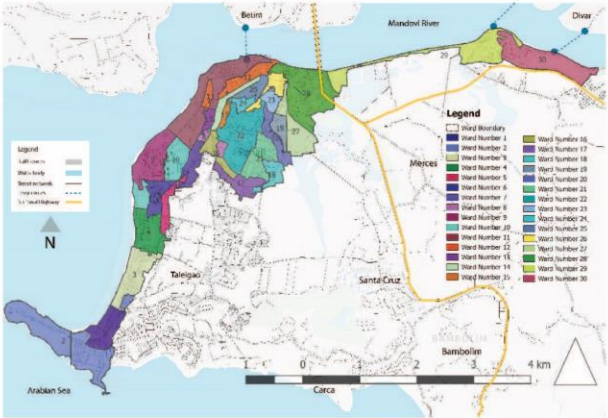
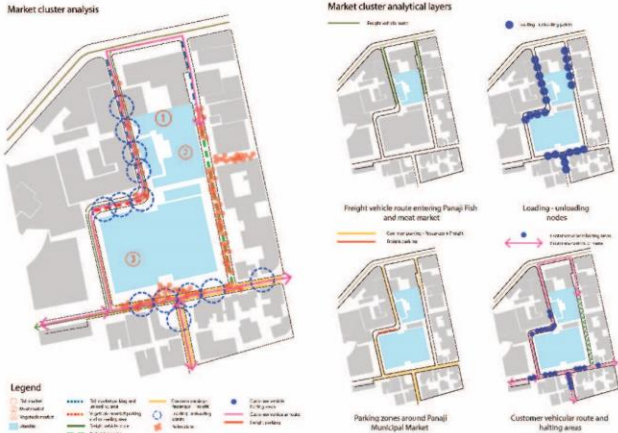


Introduce E- mobility



Improved Freight Transport





Thank you!

Supported by:



Federal Ministry
for the Environment, Nature Conservation
and Nuclear Safety

EcoLogistics
Low carbon freight for sustainable cities



Local Governments
for Sustainability
SOUTH ASIA

