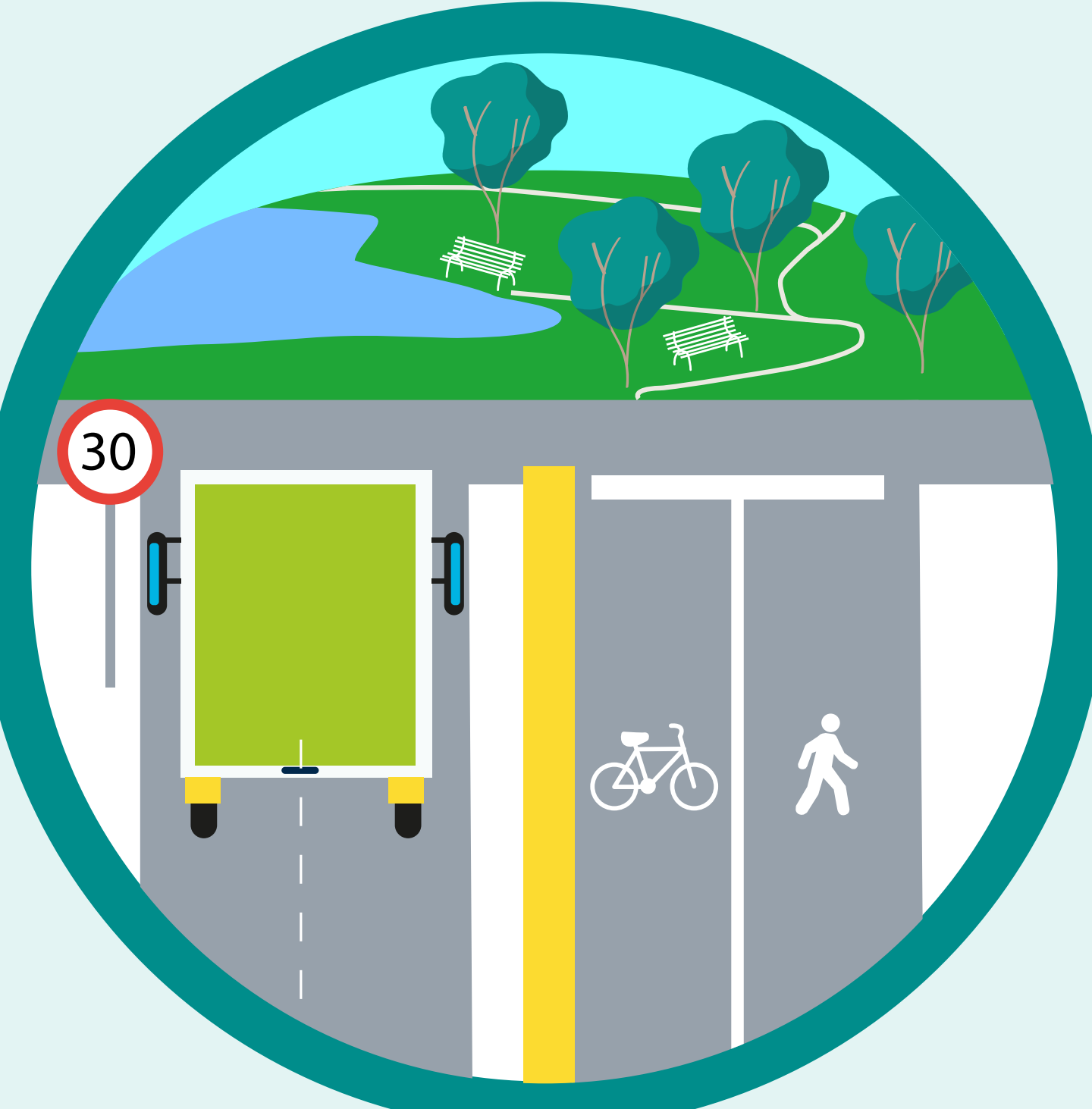
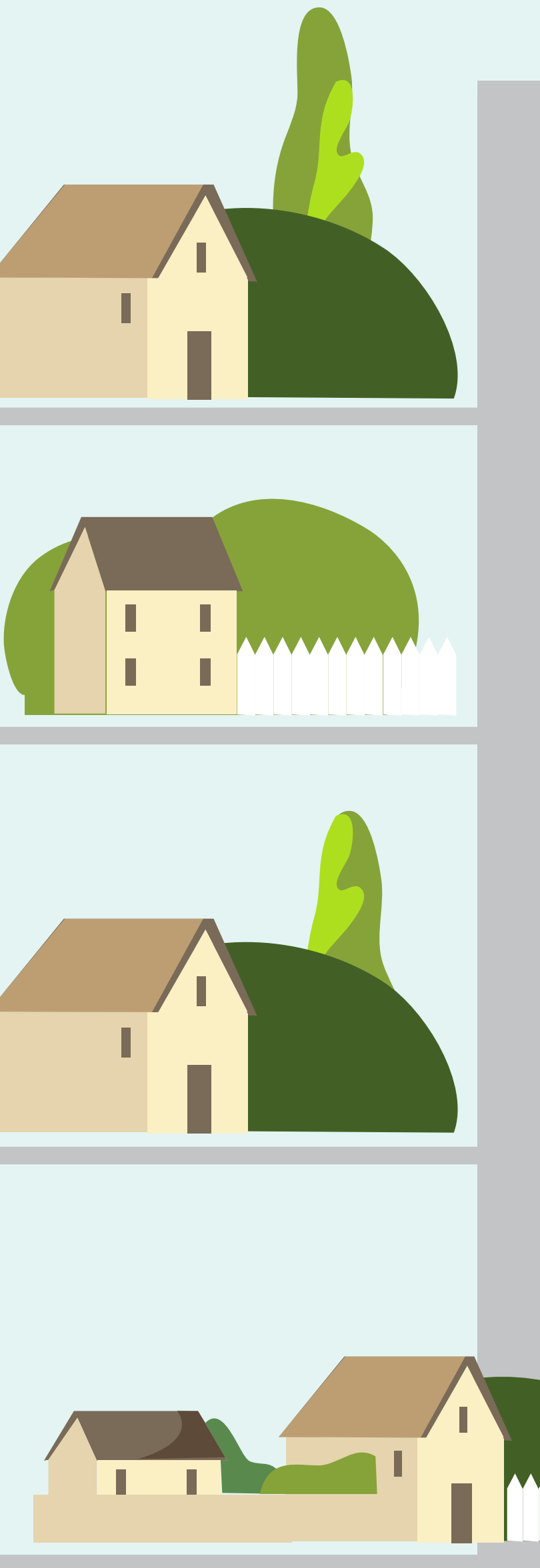


# 생태 물류 원칙

## 지속가능한 도시를 위한 저탄소 도시 물류



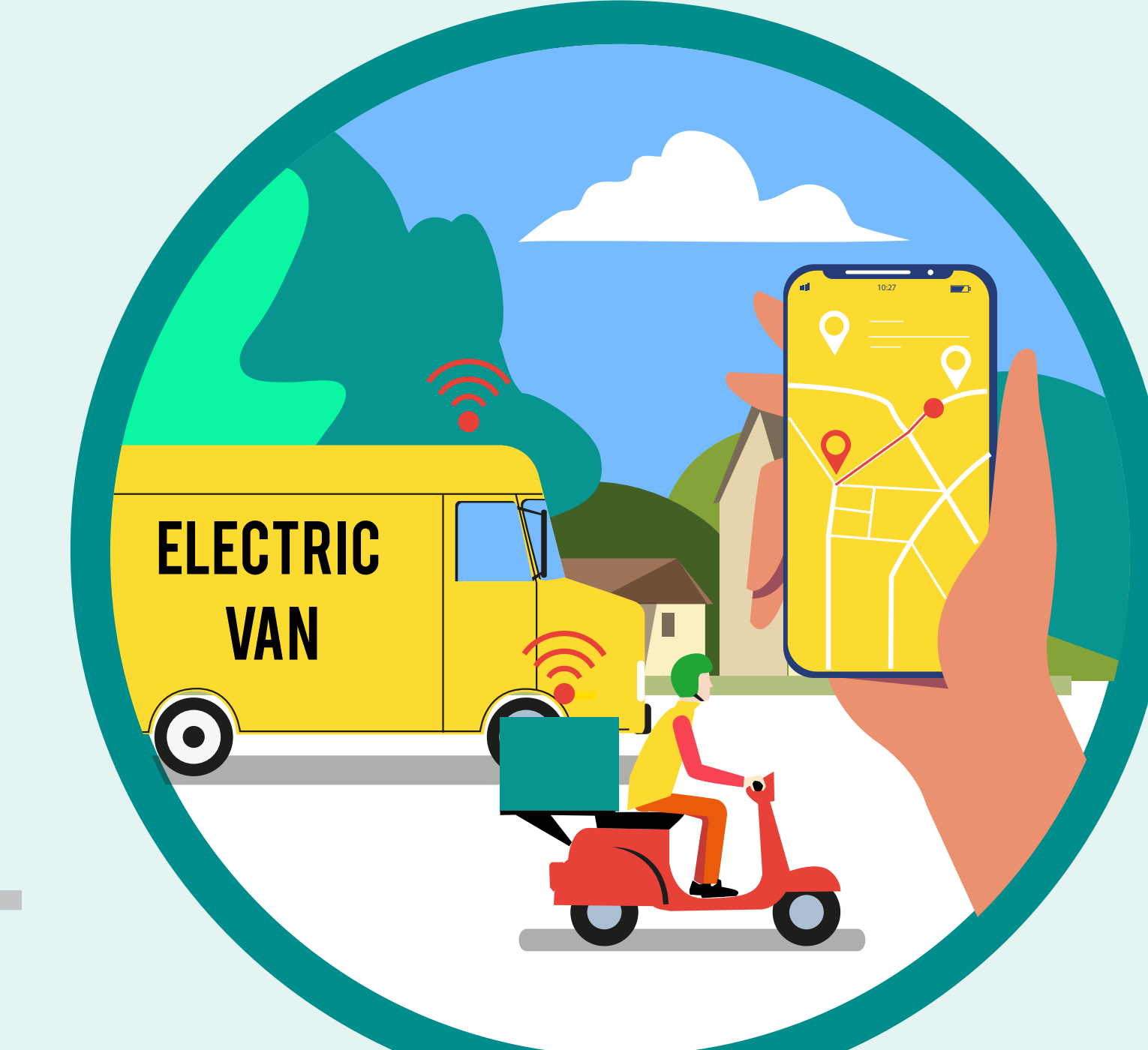
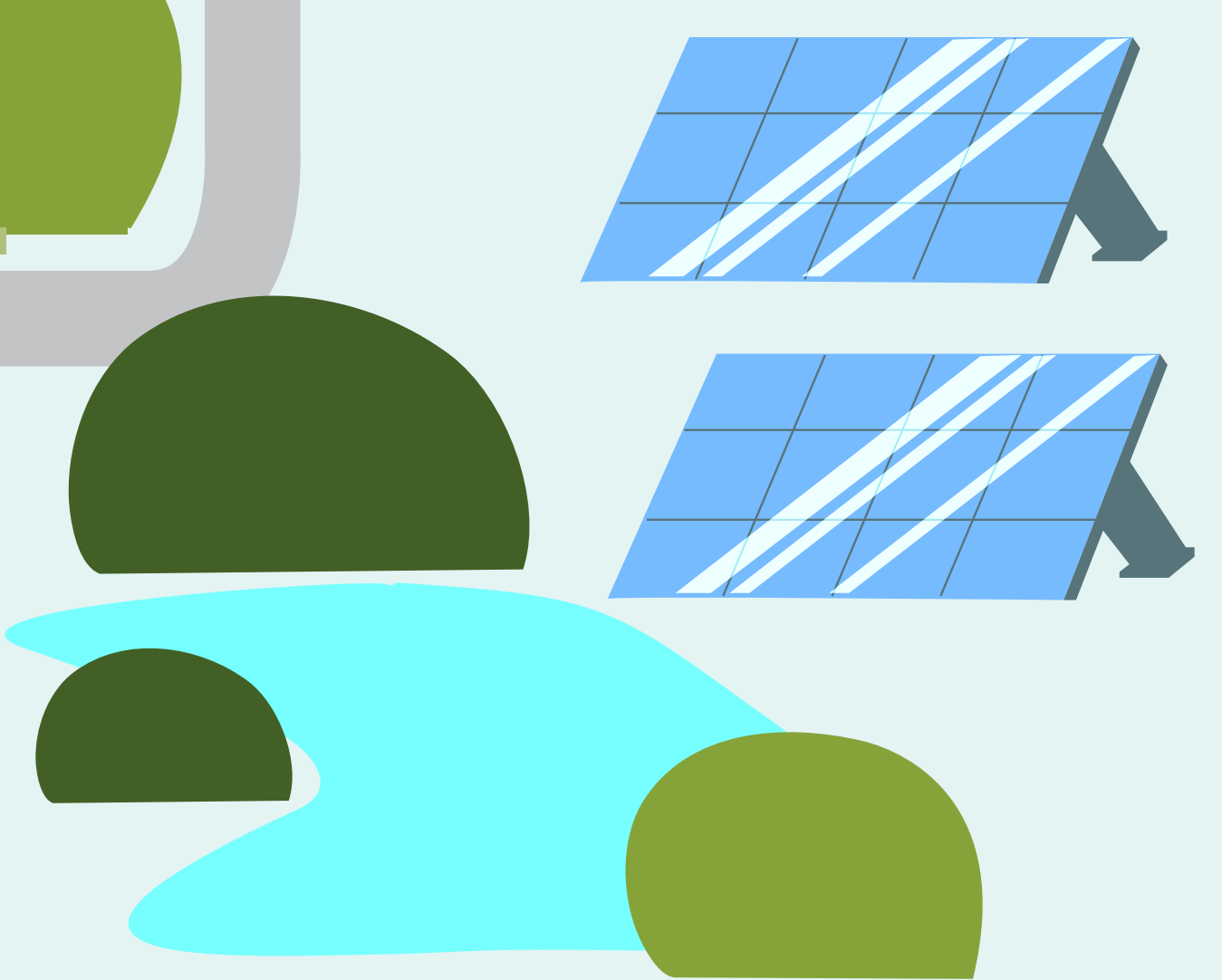
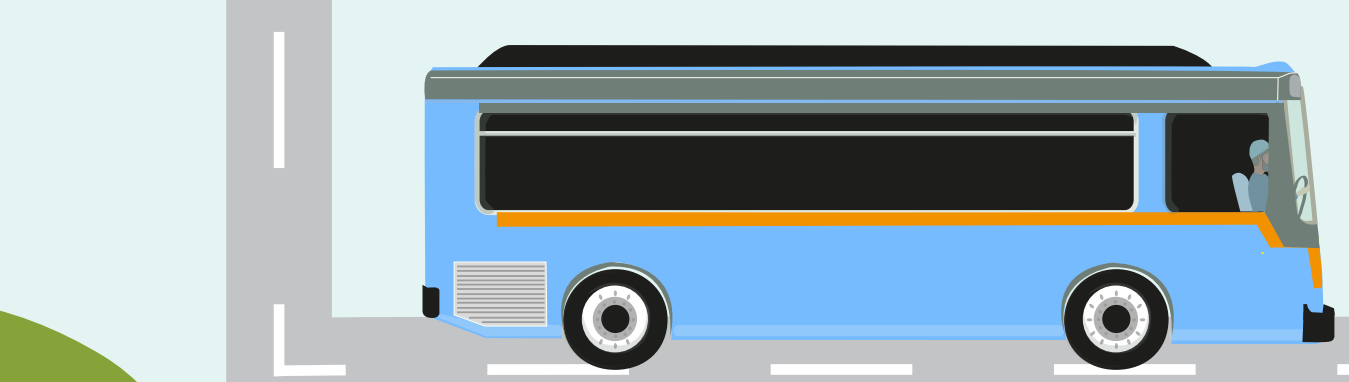
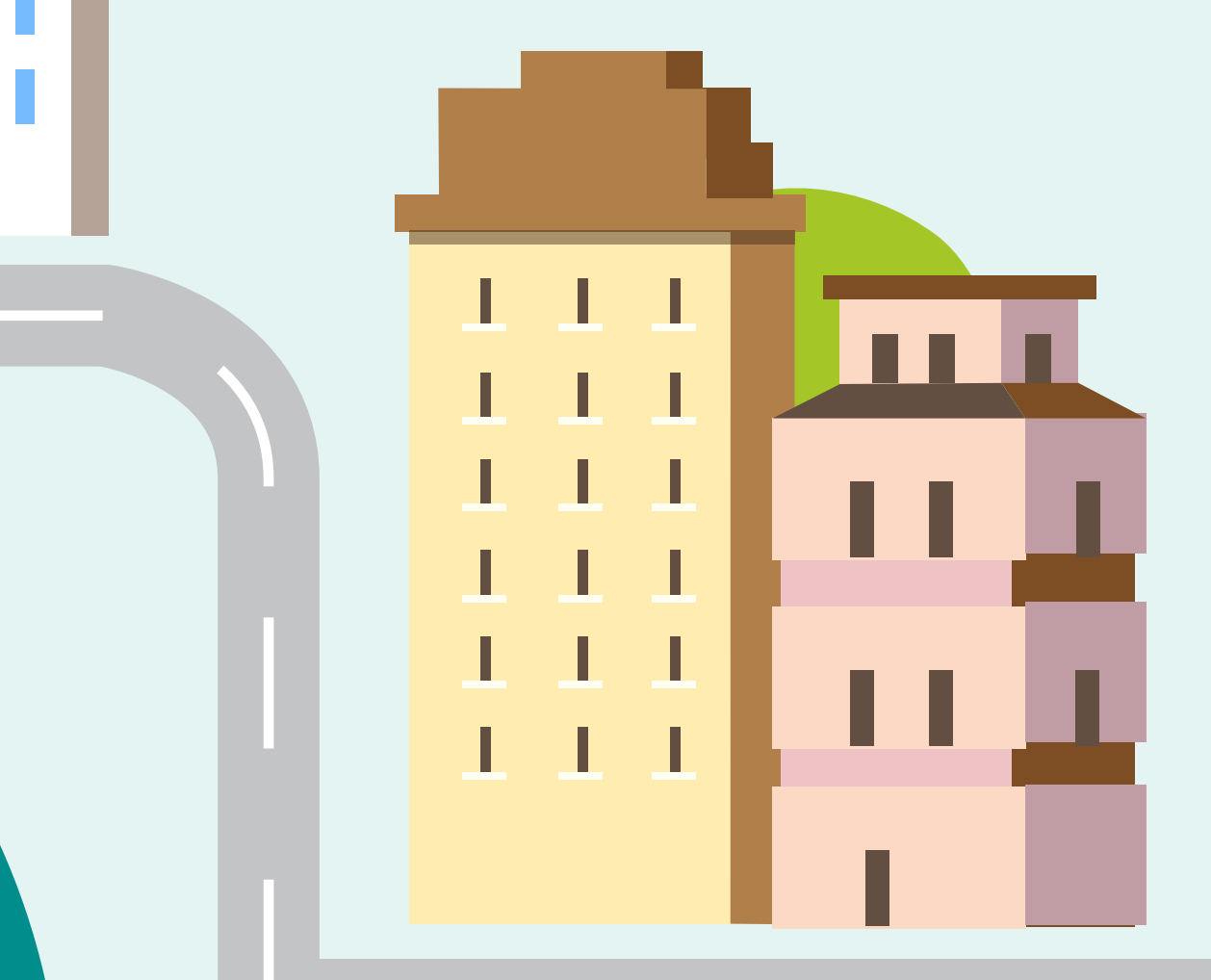
**2** 안전한 운송 수단 사용과 안전한 도로 확보



**3** 화물운송을 위한 통합적 토지 계획



**1** 대안적 배달 방법으로의 전환



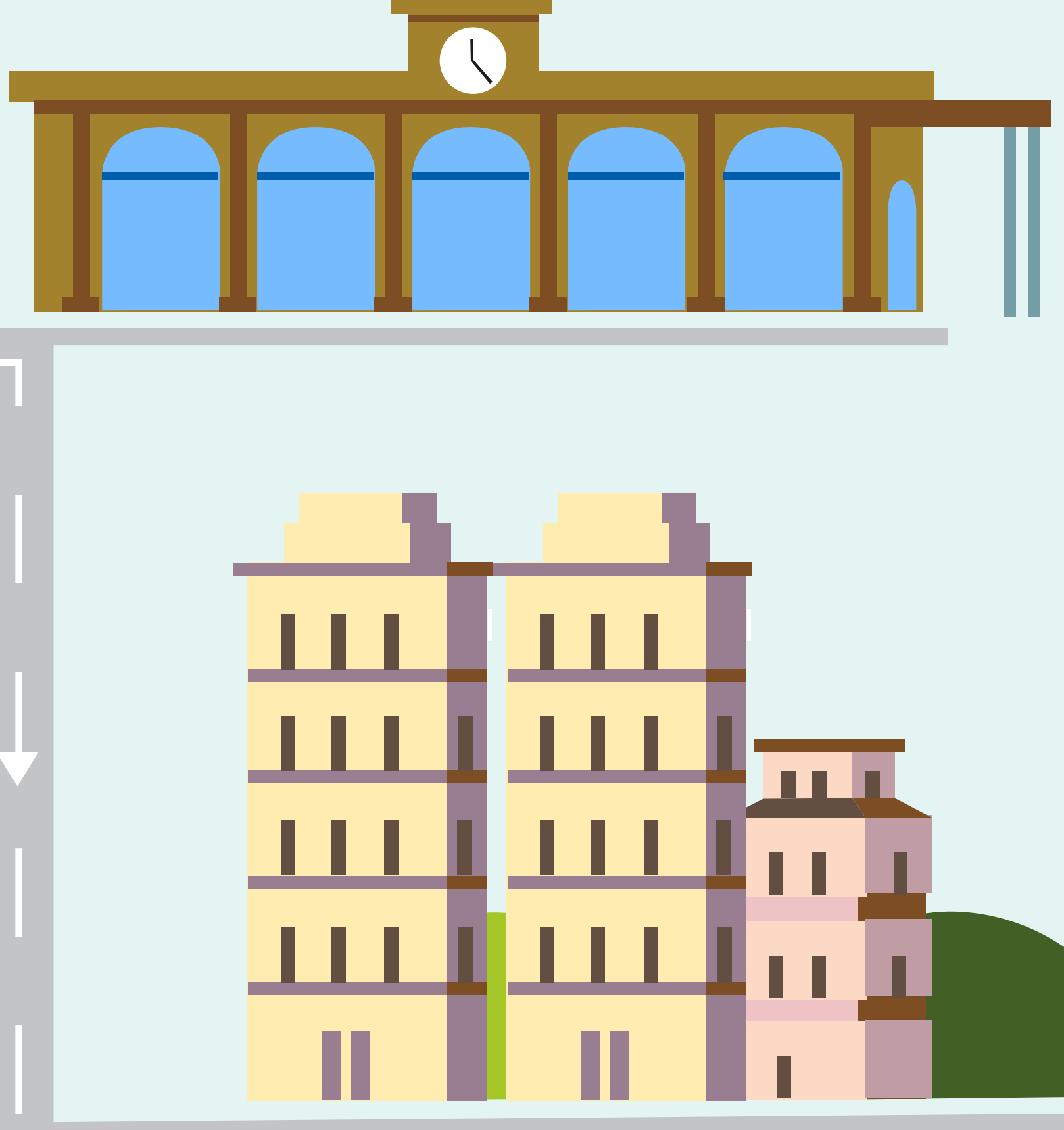
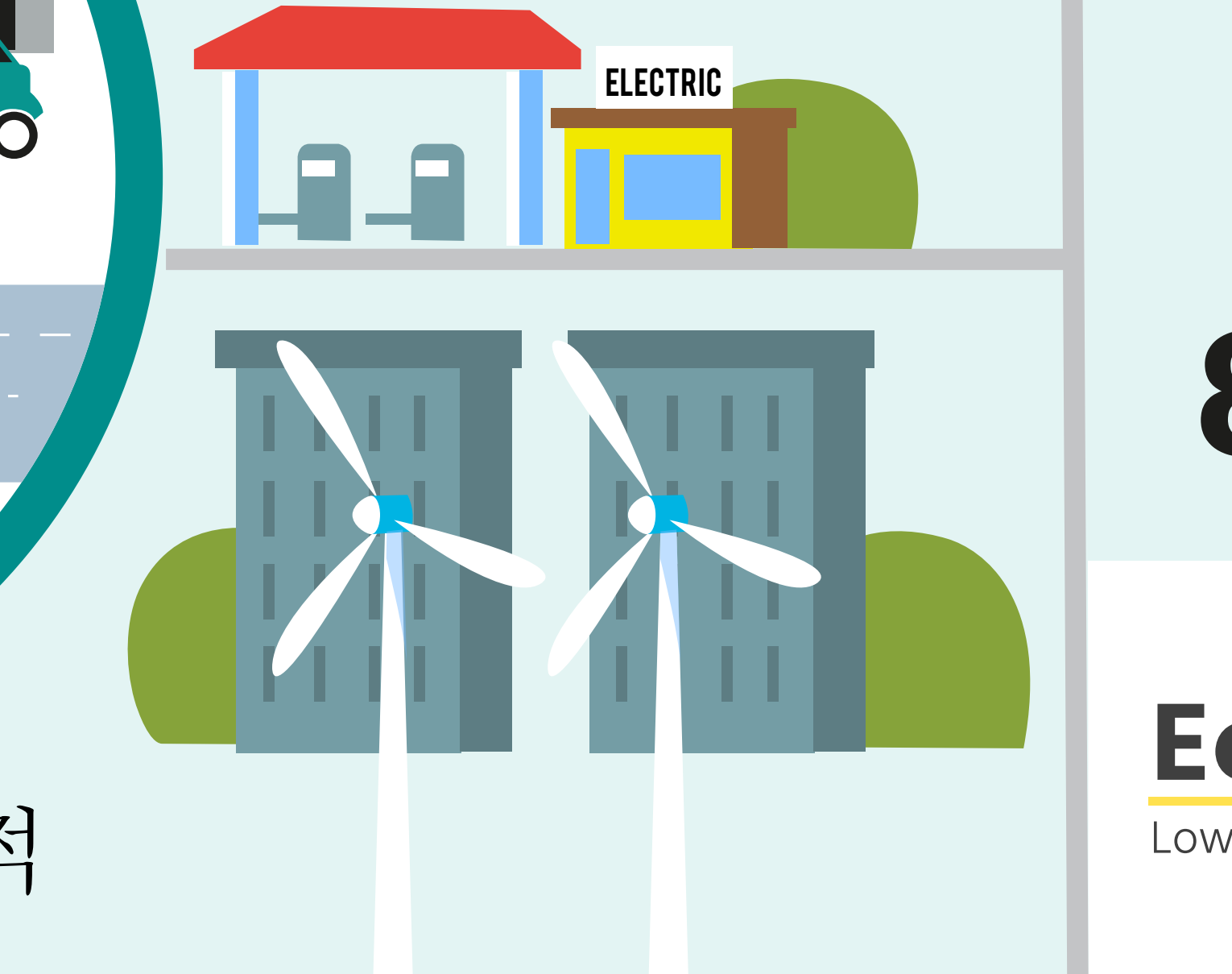
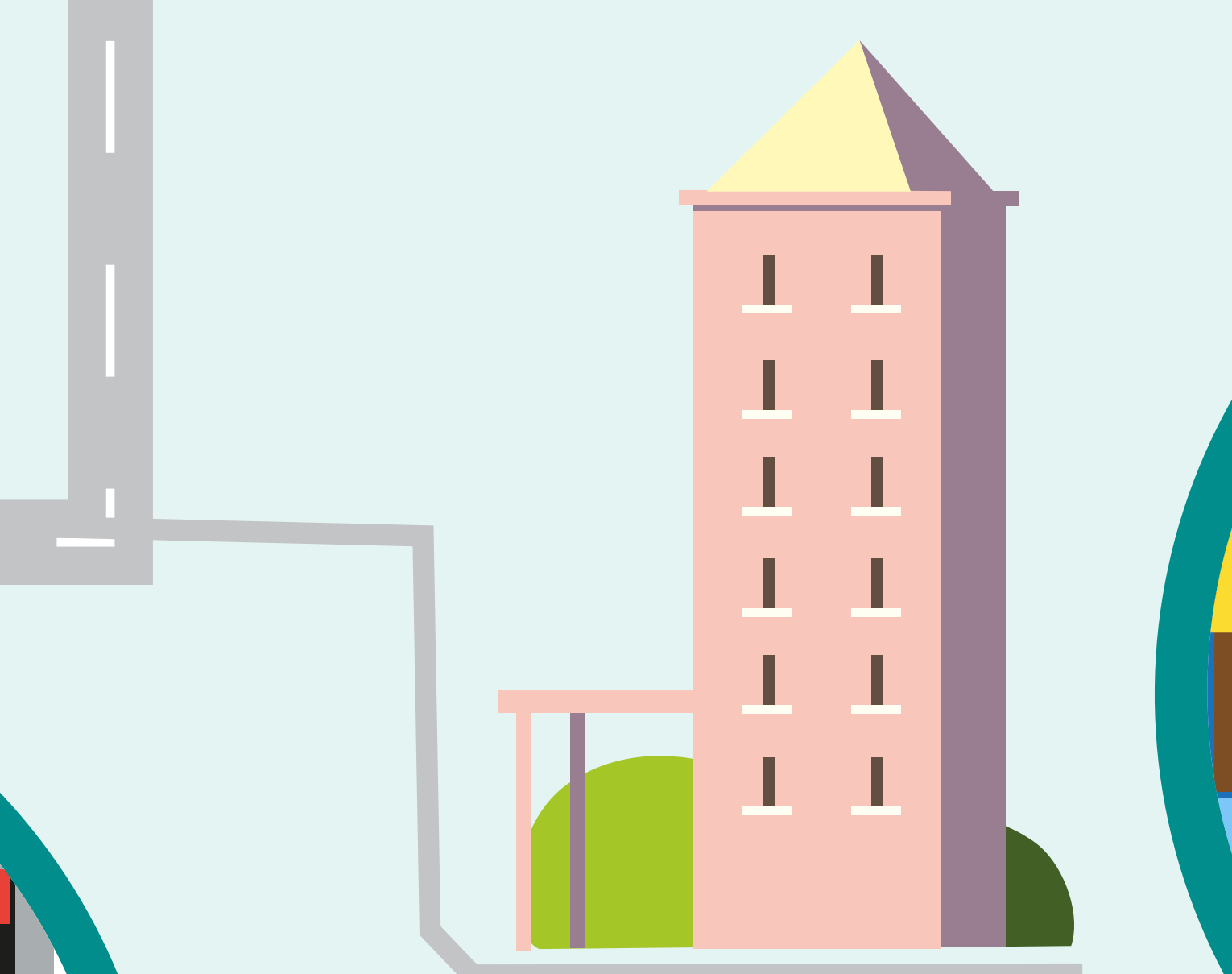
**5** 운송 체계 효율성의 극대화



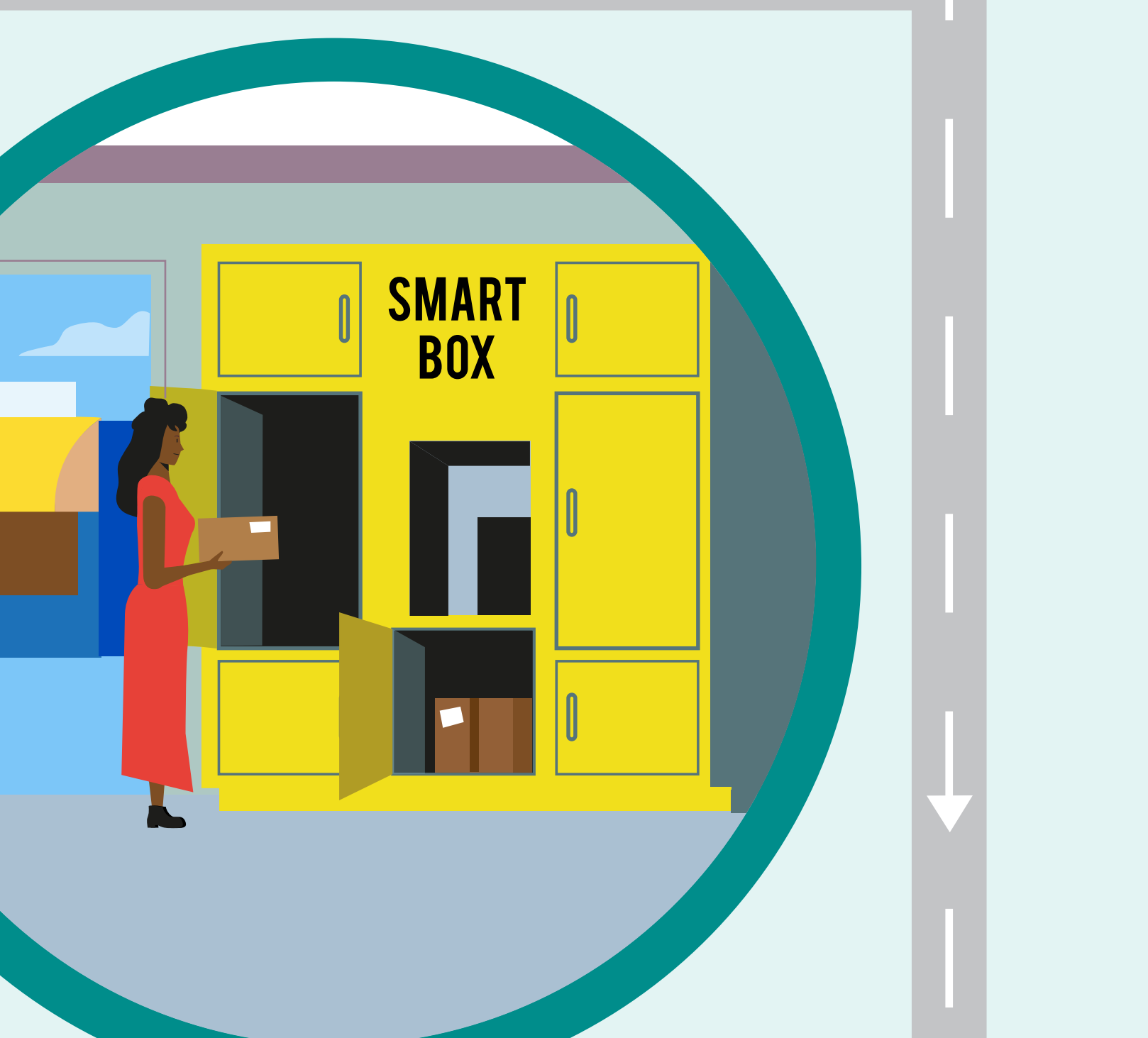
**4** 도시 운송을 위한 통합적 전략 지원



**6** 다양한 이해관계자의 의사결정 구조 설립



**7** 친환경 비즈니스 모델 체계 조성



**8** 지속가능한 물류의 미래 대비