

Portland, Oregon, USA

Sustainable Freight Planning



Daring Cities 2020



PBOT
PORTLAND BUREAU OF TRANSPORTATION

Portland's Freight History



1800

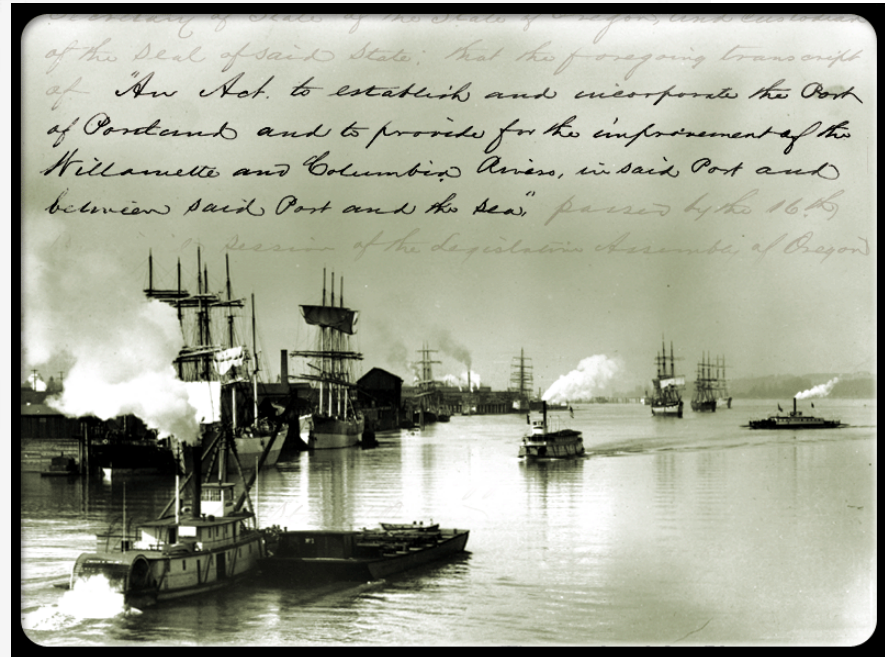
1850's

Portland originated as a seaport for Oregon's timber and grain exports to other regions. The city was sited at the farthest accessible point of inland navigation.

1900

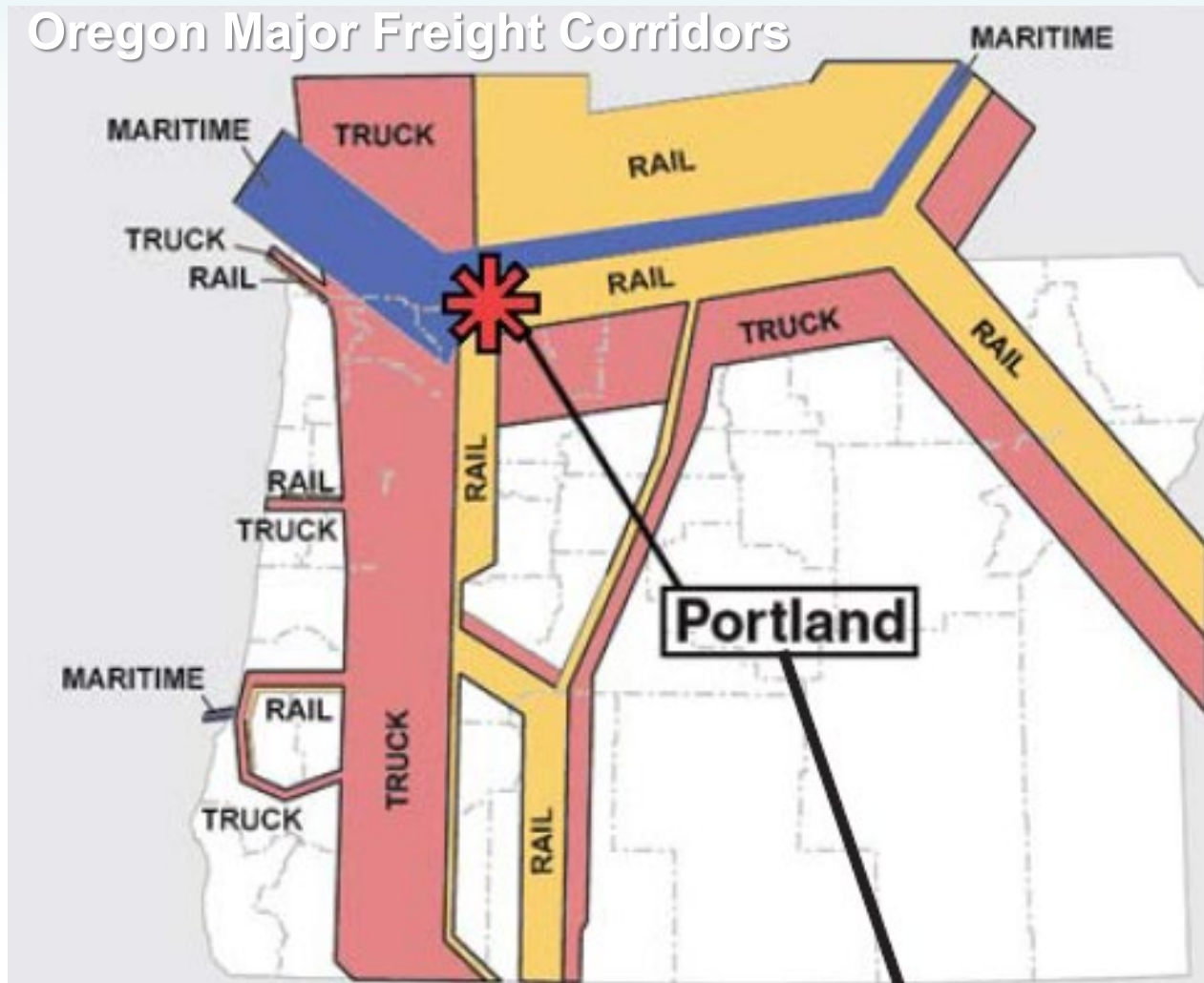
Turn of the 20th Century

Portland's railroad connection to the east was completed in 1883 along the Columbia River, a sea level route through the Cascades which still rivals that of any West Coast city. Rail lines were completed to San Francisco in 1886 and to Seattle in 1909. The Port of Portland was created in 1891 to dredge the Columbia River channel from the ocean to Portland Harbor.



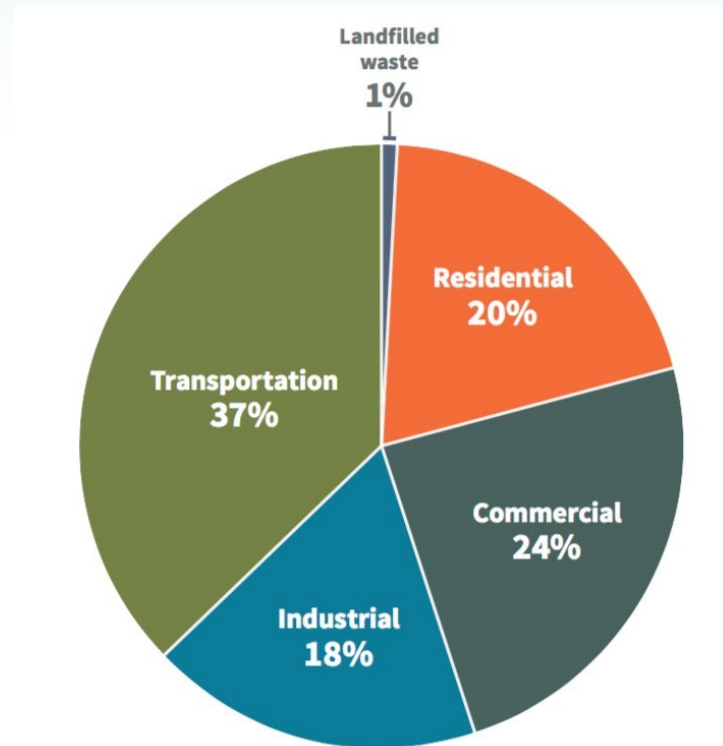
Portland's Locational Advantage

Oregon Major Freight Corridors



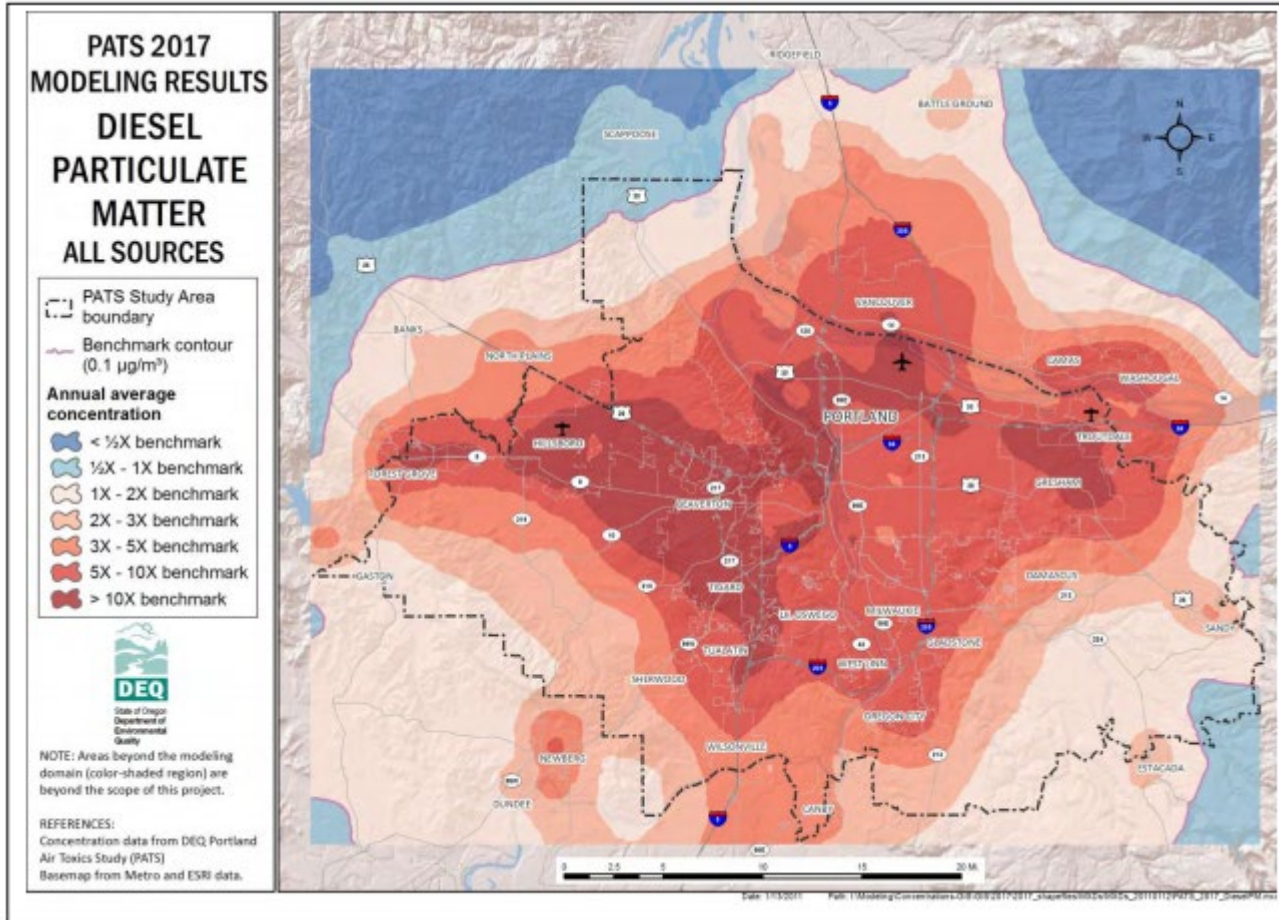
Fighting Climate Change

Nearly 40 percent of the emissions from Multnomah County result from transporting people and goods.



Total Multnomah County carbon emissions by sector (Sector-based inventory, 2013). Source: Portland Bureau of Planning and Sustainability

ENVIRONMENT & HEALTH | Portland has some of the highest diesel emissions exposure in the country



Source: Schlusser, A., Blumenstein, L. and N. Smith. 2019. "Deconstructing Diesel: A Law and Policy Roadmap for Reducing Diesel Emissions in the Portland Metropolitan Area." Green Energy Institute at Lewis and Clark Law School.

Portland Freight Planning



CITY OF PORTLAND
**FREIGHT
MASTER
PLAN**

Adopted May 10, 2006

CITY OF PORTLAND
OFFICE OF TRANSPORTATION



Addressing Climate Change

1993 First city in the United States to create a local action plan for cutting carbon



2012 Sustainable Freight Strategy

- Prepare a truck loading/parking plan
- Develop street design guidance for movement of delivery vehicles
- Identify incentives to encourage unattended delivery depots and other “last mile” delivery solutions
- Apply zoning provisions to allow centralized freight distribution districts
- Implement off-hour delivery pilot program
- Provide incentives to purchase/lease electric-hybrid delivery vehicles
- Increase the use of rail, barge and other multi-modal freight options



City of Portland Central City Sustainable Freight Strategy

Report and
Recommendations

October 2012



EcoLogistics Principles



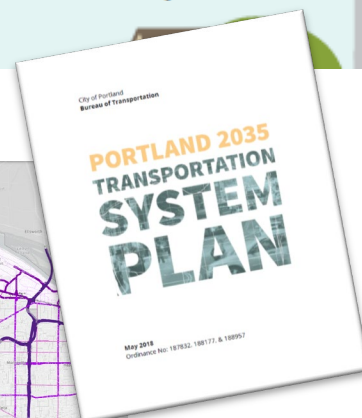
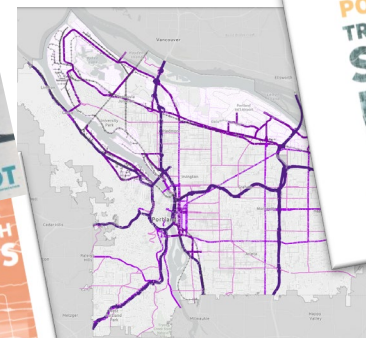
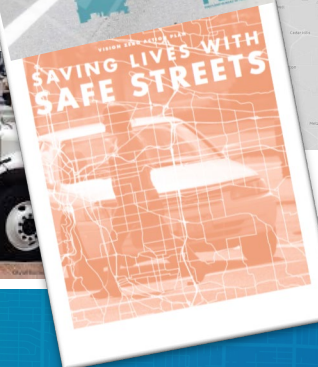
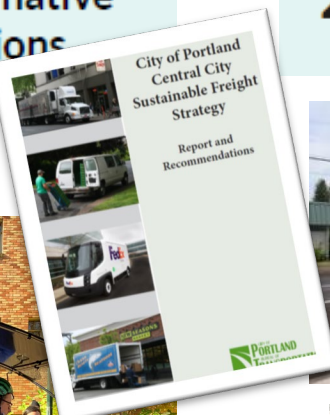
1 Shift to alternative delivery options



2 Commit to safer urban delivery vehicles for safer streets



3 Integrate land use planning for freight delivery



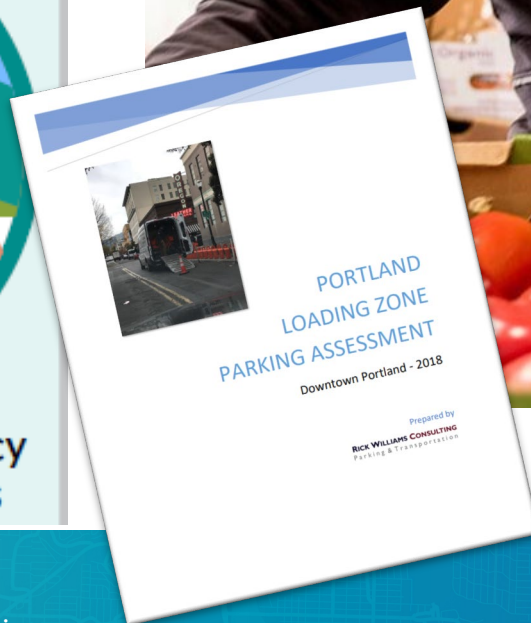
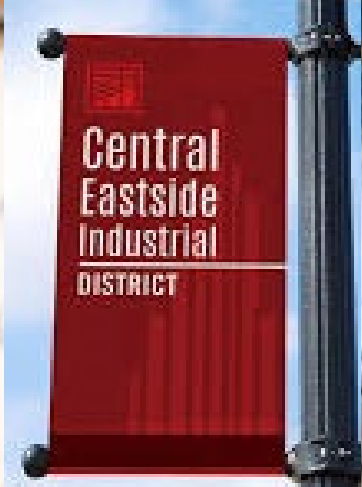
EcoLogistics Principles



4 Support consolidation strategies for urban deliveries



5 Optimize the efficiency of delivery operations



EcoLogistics Principles



6 Promote multi-stakeholder decision making structures



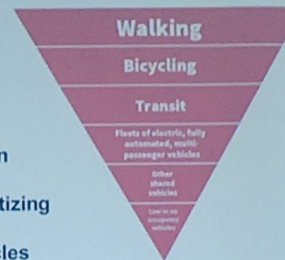
7 Create frameworks for climate-friendly business models



8 Embrace the future of sustainable logistics



Strategy for People Movement



Transportation System Plan
Policy 9.6:
Provides support for prioritizing walking, biking and transit over single-occupant vehicles

For more information, visit transportation.pboregon.gov



